

Trying 3106016892...Open

Welcome to STN International! Enter x:x
LOGINID:sssptal62lmxw
PASSWORD:
TERMINAL (ENTER 1, 2, 3, OR ?):2

* * * * * Welcome to STN International * * * * *

NEWS 1 Web Page URLs for STN Seminar Schedule - N. America
NEWS 2 Dec 17 The CA Lexicon available in the CAPLUS and CA files
NEWS 3 Feb 06 Engineering Information Encompass files have new names
NEWS 4 Feb 16 TOXLINE no longer being updated
NEWS 5 Apr 23 Search Derwent WPINDEX by chemical structure
NEWS 6 Apr 23 PRE-1967 REFERENCES NOW SEARCHABLE IN CAPLUS AND CA
NEWS 7 May 07 DGENE Reload
NEWS 8 Jun 20 Published patent applications (A1) are now in USPATFULL

NEWS EXPRESS May 23 CURRENT WINDOWS VERSION IS V6.0a,
CURRENT MACINTOSH VERSION IS V5.0C (ENG) AND V5.0JB (JP),
AND CURRENT DISCOVER FILE IS DATED 06 APRIL 2001
NEWS HOURS STN Operating Hours Plus Help Desk Availability
NEWS INTER General Internet Information
NEWS LOGIN Welcome Banner and News Items
NEWS PHONE Direct Dial and Telecommunication Network Access to STN
NEWS WWW CAS World Wide Web Site (general information)

Enter NEWS followed by the item number or name to see news on that specific topic.

All use of STN is subject to the provisions of the STN Customer agreement. Please note that this agreement limits use to scientific research. Use for software development or design or implementation of commercial gateways or other similar uses is prohibited and may result in loss of user privileges and other penalties.

* * * * * STN Columbus * * * * *

FILE 'HOME' ENTERED AT 17:03:12 ON 29 JUN 2001

=> file registry

COST IN U.S. DOLLARS	SINCE FILE ENTRY	TOTAL SESSION
FULL ESTIMATED COST	0.15	0.15

FILE 'REGISTRY' ENTERED AT 17:03:24 ON 29 JUN 2001
USE IS SUBJECT TO THE TERMS OF YOUR STN CUSTOMER AGREEMENT.
PLEASE SEE "HELP USAGETERMS" FOR DETAILS.
COPYRIGHT (C) 2001 American Chemical Society (ACS)

STRUCTURE FILE UPDATES: 28 JUN 2001 HIGHEST RN 343921-18-6
DICTIONARY FILE UPDATES: 28 JUN 2001 HIGHEST RN 343921-18-6

TSCA INFORMATION NOW CURRENT THROUGH January 11, 2001

Please note that search-term pricing does apply when conducting SmartSELECT searches.

Structure search limits have been increased. See HELP SLIMIT

for details.

=> e 2864-50-8/rn

E1	1	2864-48-4/RN
E2	1	2864-49-5/RN
E3	1 -->	2864-50-8/RN
E4	1	2864-51-9/RN
E5	1	2864-52-0/RN
E6	1	2864-54-2/RN
E7	1	2864-56-4/RN
E8	1	2864-57-5/RN
E9	1	2864-59-7/RN
E10	1	2864-60-0/RN
E11	1	2864-61-1/RN
E12	1	2864-63-3/RN

=> s e3

L1 1 2864-50-8/RN

=> d L1

L1 ANSWER 1 OF 1 REGISTRY COPYRIGHT 2001 ACS

RN 2864-50-8 REGISTRY

CN Cholest-5-en-3-ol (3.beta.)-, hydrogen sulfate, sodium salt (9CI) (CA INDEX NAME)

OTHER CA INDEX NAMES:

CN Cholesterol, hydrogen sulfate, sodium salt (8CI)

CN Cholesteryl sodium sulfate (6CI)

OTHER NAMES:

CN Cholesteryl sulfate sodium salt

CN Sodium cholesteryl sulfate

FS STEREOSEARCH

DR 164266-84-6, 127565-99-5

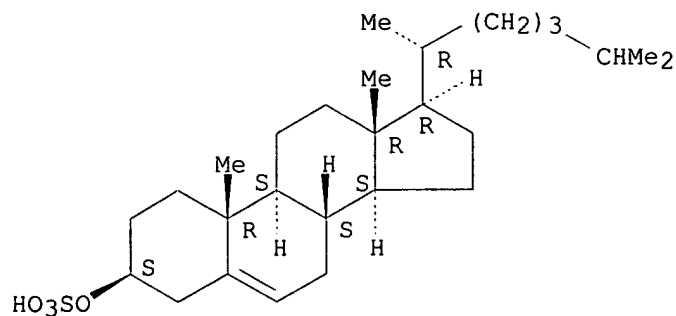
MF C27 H46 O4 S . Na

CI COM

LC STN Files: BEILSTEIN*, BIOSIS, CA, CAOLD, CAPLUS, CASREACT, CHEMCATS, CSCHEM, IPA, PROMT, TOXLINE, TOXLIT, USPATFULL
(*File contains numerically searchable property data)

CRN (1256-86-6)

Absolute stereochemistry.



Na

33 REFERENCES IN FILE CA (1967 TO DATE)
3 REFERENCES TO NON-SPECIFIC DERIVATIVES IN FILE CA
33 REFERENCES IN FILE CAPLUS (1967 TO DATE)
4 REFERENCES IN FILE CAOLD (PRIOR TO 1967)

=> e cholesterol, hydrogen sulfate

E1	1	CHOLESTERINUM/BI
E2	1834	CHOLESTEROL/BI
E3	0	--> CHOLESTEROL, HYDROGEN SULFATE/BI
E4	1	CHOLESTEROLATE/BI
E5	1	CHOLESTEROLEMIC/BI
E6	1	CHOLESTERONE/BI
E7	1	CHOLESTEROXIDE/BI
E8	987	CHOLESTERYL/BI
E9	1	CHOLESTERYLACET/BI
E10	1	CHOLESTERYLACETAMIDE/BI
E11	2	CHOLESTERYLAMINE/BI
E12	1	CHOLESTERYLCARBON/BI

=> e cholesterol sulfate

E1	1	CHOLESTERINUM/BI
E2	1834	CHOLESTEROL/BI
E3	0	--> CHOLESTEROL SULFATE/BI
E4	1	CHOLESTEROLATE/BI
E5	1	CHOLESTEROLEMIC/BI
E6	1	CHOLESTERONE/BI
E7	1	CHOLESTEROXIDE/BI
E8	987	CHOLESTERYL/BI
E9	1	CHOLESTERYLACET/BI
E10	1	CHOLESTERYLACETAMIDE/BI
E11	2	CHOLESTERYLAMINE/BI
E12	1	CHOLESTERYLCARBON/BI

=> e cholesteryl sulfate

E1	1	CHOLESTEROXIDE/BI
E2	987	CHOLESTERYL/BI
E3	0	--> CHOLESTERYL SULFATE/BI
E4	1	CHOLESTERYLACET/BI
E5	1	CHOLESTERYLACETAMIDE/BI
E6	2	CHOLESTERYLAMINE/BI
E7	1	CHOLESTERYLCARBON/BI
E8	1	CHOLESTERYLCARBONATE/BI
E9	5	CHOLESTERYLDI/BI
E10	4	CHOLESTERYLDIMETHYL/BI
E11	3	CHOLESTERYLDIMETHYLSULFON/BI
E12	3	CHOLESTERYLDIMETHYLSULFONIUM/BI

=> s cholesterol and sulfate

	1834	CHOLESTEROL
	68360	SULFATE
	342	SULFATES
	68360	SULFATE
		(SULFATE OR SULFATES)
L2	23	CHOLESTEROL AND SULFATE

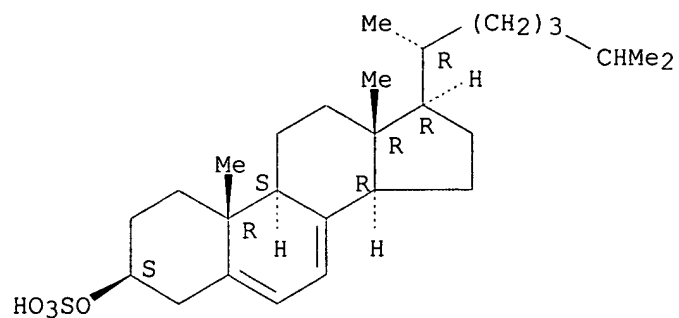
=> d L2 scan

L2 23 ANSWERS REGISTRY COPYRIGHT 2001 ACS
IN Cholesta-5,7-dien-3-ol, hydrogen sulfate, (3.beta.)-, compd. with

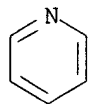
pyridine (1:1) (9CI)
MF C27 H44 O4 S . C5 H5 N

CM 1

Absolute stereochemistry.



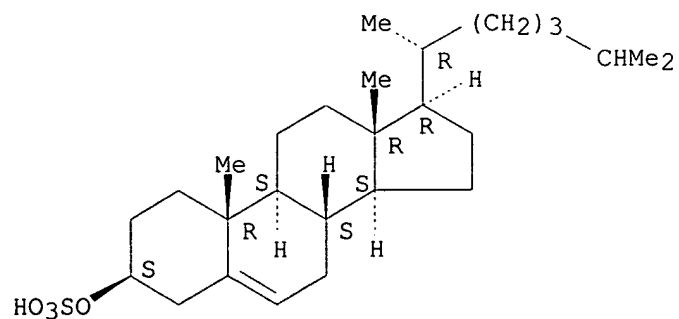
CM 2



HOW MANY MORE ANSWERS DO YOU WISH TO SCAN? (1):
HOW MANY MORE ANSWERS DO YOU WISH TO SCAN? (1):1

L2 23 ANSWERS REGISTRY COPYRIGHT 2001 ACS
IN Cholest-5-en-3-ol (3.beta.)-, hydrogen sulfate, sodium salt (9CI)
MF C27 H46 O4 S . Na
CI COM

Absolute stereochemistry.

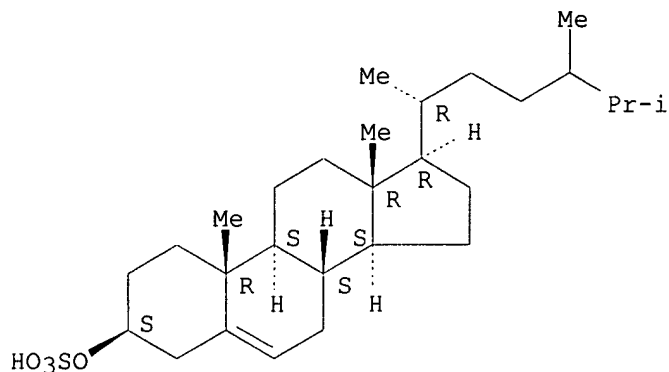


Na

HOW MANY MORE ANSWERS DO YOU WISH TO SCAN? (1):1

L2 23 ANSWERS REGISTRY COPYRIGHT 2001 ACS
IN Ergost-5-en-3-ol, hydrogen sulfate, (3.beta.,24.xi.)- (9CI)
MF C28 H48 O4 S

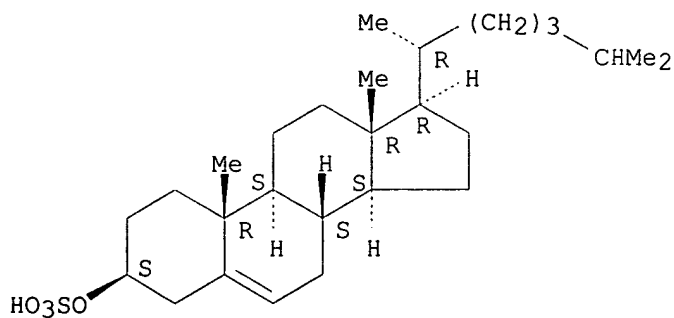
Absolute stereochemistry.



HOW MANY MORE ANSWERS DO YOU WISH TO SCAN? (1):1

L2 23 ANSWERS REGISTRY COPYRIGHT 2001 ACS
IN Cholest-5-en-3-ol (3.beta.)-, hydrogen sulfate, labeled with tritium (9CI)
MF C27 H46 O4 S

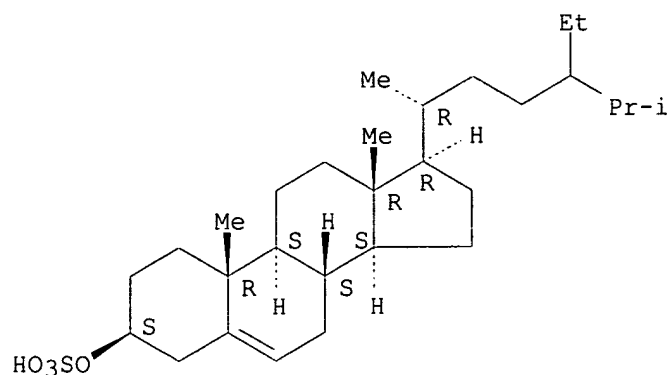
Absolute stereochemistry.



HOW MANY MORE ANSWERS DO YOU WISH TO SCAN? (1):1

L2 23 ANSWERS REGISTRY COPYRIGHT 2001 ACS
IN Stigmast-5-en-3-ol, hydrogen sulfate, (3.beta.,24.xi.)- (9CI)
MF C29 H50 O4 S

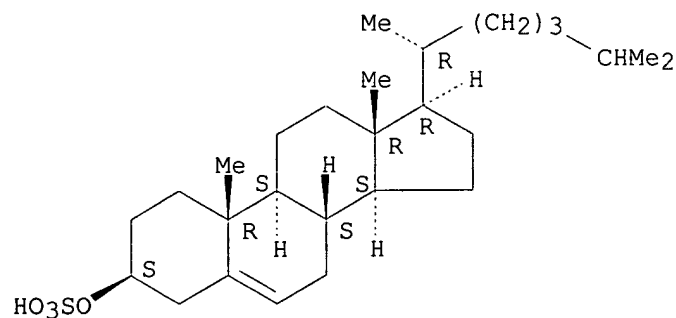
Absolute stereochemistry.



HOW MANY MORE ANSWERS DO YOU WISH TO SCAN? (1):1

L2 23 ANSWERS REGISTRY COPYRIGHT 2001 ACS
 IN **Cholest-5-en-3-ol (3.beta.)-, hydrogen sulfate, potassium salt (9CI)**
 MF C27 H46 O4 S . K

Absolute stereochemistry.



● K

HOW MANY MORE ANSWERS DO YOU WISH TO SCAN? (1):0

=> s cholest-5-en-3-ol (3.beta.)-, hydrogen sulfate
 MISSING OPERATOR '5-EN-3-OL (3.BETA).'

=> s cholesterol and sulfate and potassium

1834 CHOLESTEROL
 68360 SULFATE
 342 SULFATES
 68360 SULFATE
 (SULFATE OR SULFATES)
 97510 POTASSIUM

L3 1 CHOLESTEROL AND SULFATE AND POTASSIUM

=> d L3

L3 ANSWER 1 OF 1 REGISTRY COPYRIGHT 2001 ACS
RN 6614-96-6 REGISTRY
CN Cholest-5-en-3-ol (3.beta.)-, hydrogen sulfate, potassium salt
(9CI) (CA INDEX NAME)

OTHER CA INDEX NAMES:

CN Cholesterol, hydrogen sulfate, potassium salt (8CI)
CN Cholesteryl potassium sulfate (6CI, 7CI)

OTHER NAMES:

CN Cholesterol 3-O-(hydrogen sulfate) potassium salt
CN Cholesterol sulfate potassium salt
CN Cholesteryl sulfate potassium salt

FS STEREOSEARCH

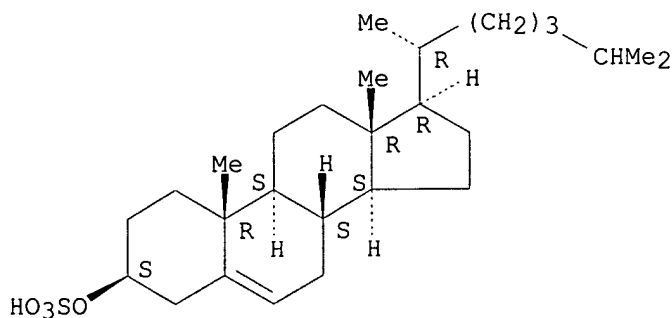
DR 127579-90-2

MF C27 H46 O4 S . K

LC STN Files: BEILSTEIN*, CA, CAOLD, CAPLUS, CHEMCATS, CSCHEM, TOXLIT
(*File contains numerically searchable property data)

CRN (1256-86-6)

Absolute stereochemistry.



● K
11 REFERENCES IN FILE CA (1967 TO DATE)
11 REFERENCES IN FILE CAPLUS (1967 TO DATE)
3 REFERENCES IN FILE CAOLD (PRIOR TO 1967)

=> d his

(FILE 'HOME' ENTERED AT 17:03:12 ON 29 JUN 2001)

FILE 'REGISTRY' ENTERED AT 17:03:24 ON 29 JUN 2001

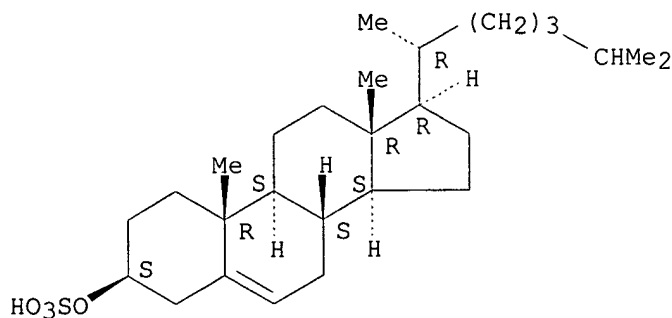
E 2864-50-8/RN
L1 1 S E3
E CHOLESTEROL, HYDROGEN SULFATE
E CHOLESTEROL SULFATE
E CHOLESTERYL SULFATE
L2 23 S CHOLESTEROL AND SULFATE
L3 1 S CHOLESTEROL AND SULFATE AND POTASSIUM

=> d L1 and L3
 L3 IS NOT VALID HERE
 For an explanation, enter "HELP DISPLAY".

=> d L1

L1 ANSWER 1 OF 1 REGISTRY COPYRIGHT 2001 ACS
 RN 2864-50-8 REGISTRY
 CN Cholest-5-en-3-ol (3.beta.)-, hydrogen sulfate, sodium salt (9CI) (CA INDEX NAME)
 OTHER CA INDEX NAMES:
 CN Cholesterol, hydrogen sulfate, sodium salt (8CI)
 CN Cholesteryl sodium sulfate (6CI)
 OTHER NAMES:
 CN Cholesteryl sulfate sodium salt
 CN Sodium cholesteryl sulfate
 FS STEREOSEARCH
 DR 164266-84-6, 127565-99-5
 MF C27 H46 O4 S . Na
 CI COM
 LC STN Files: BEILSTEIN*, BIOSIS, CA, CAOLD, CAPLUS, CASREACT, CHEMCATS, CSCHEM, IPA, PROMT, TOXLINE, TOXLIT, USPATFULL
 (*File contains numerically searchable property data)
 CRN (1256-86-6)

Absolute stereochemistry.



● Na

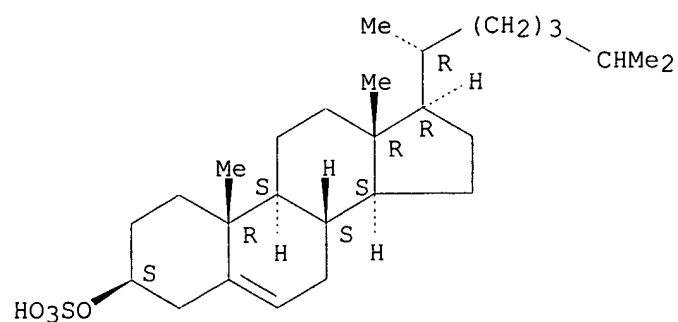
33 REFERENCES IN FILE CA (1967 TO DATE)
 3 REFERENCES TO NON-SPECIFIC DERIVATIVES IN FILE CA
 33 REFERENCES IN FILE CAPLUS (1967 TO DATE)
 4 REFERENCES IN FILE CAOLD (PRIOR TO 1967)

=> d 13

L3 ANSWER 1 OF 1 REGISTRY COPYRIGHT 2001 ACS
 RN 6614-96-6 REGISTRY
 CN Cholest-5-en-3-ol (3.beta.)-, hydrogen sulfate, potassium salt (9CI) (CA INDEX NAME)
 OTHER CA INDEX NAMES:
 CN Cholesterol, hydrogen sulfate, potassium salt (8CI)

CN Cholesteryl potassium sulfate (6CI, 7CI)
 OTHER NAMES:
 CN Cholesterol 3-O-(hydrogen sulfate) potassium salt
 CN Cholesterol sulfate potassium salt
 CN Cholesteryl sulfate potassium salt
 FS STEREOSEARCH
 DR 127579-90-2
 MF C27 H46 O4 S . K
 LC STN Files: BEILSTEIN*, CA, CAOLD, CAPLUS, CHEMCATS, CSCHEM, TOXLIT
 (*File contains numerically searchable property data)
 CRN (1256-86-6)

Absolute stereochemistry.



● K

11 REFERENCES IN FILE CA (1967 TO DATE)
 11 REFERENCES IN FILE CAPLUS (1967 TO DATE)
 3 REFERENCES IN FILE CAOLD (PRIOR TO 1967)

=> file kosmet

COST IN U.S. DOLLARS

SINCE FILE

TOTAL

ENTRY

SESSION

FULL ESTIMATED COST

28.72

28.87

FILE 'KOSMET' ENTERED AT 17:10:38 ON 29 JUN 2001

COPYRIGHT (C) 2001 International Federation of the Societies of Cosmetics Chemists

FILE LAST UPDATED: 08 JUN 2001

<20010608/UP>

FILE COVERS 1968 TO DATE.

=> s cholesterol and sulfate

190 CHOLESTEROL

1 CHOLESTEROLS

190 CHOLESTEROL

(CHOLESTEROL OR CHOLESTEROLS)

616 SULFATE

120 SULFATES

669 SULFATE

(SULFATE OR SULFATES)

L4

53 CHOLESTEROL AND SULFATE

=> s exfoliant
7 EXFOLIANT
9 EXFOLIANTS
L5 14 EXFOLIANT
(EXFOLIANT OR EXFOLIANTS)

=> s L4 and L5
L6 0 L4 AND L5

=> s retinoic or retinoid
367 RETINOIC
107 RETINOID
267 RETINOIDS
279 RETINOID
(RETINOID OR RETINOIDS)
L7 443 RETINOIC OR RETINOID

=> s L4 and L7
L8 6 L4 AND L7

=> d L8 1-6 ti

L8 ANSWER 1 OF 6 KOSMET COPYRIGHT 2001 IFSCC
TI THE RECONSTRUCTED EPIDERMIS SKINETHIC AS A MODEL FOR STUDYING THE
EFFECTS
OF COMPOUNDS ON EPIDERMAL GROWTH AND/OR DIFFERENTIATION

L8 ANSWER 2 OF 6 KOSMET COPYRIGHT 2001 IFSCC
TI TECHNICALLY SPEAKING

L8 ANSWER 3 OF 6 KOSMET COPYRIGHT 2001 IFSCC
TI ACTION OF PHORBOL ESTERS, BRYOSTATINS, AND **RETINOIC** ACID ON
CHOLESTEROL SULFATE SYNTHESIS : RELATION TO THE
MULTISTEP PROCESS OF DIFFERENTIATION IN HUMAN EPIDERMAL KERATINOCYTES

L8 ANSWER 4 OF 6 KOSMET COPYRIGHT 2001 IFSCC
TI INCREASED **CHOLESTEROL SULFATE** AND **CHOLESTEROL**
SULFOTRANSFERASE ACTIVITY IN RELATION TO THE MULTI-STEP PROCESS OF
DIFFERENTIATION IN HUMAN EPIDERMAL KERATINOCYTES

L8 ANSWER 5 OF 6 KOSMET COPYRIGHT 2001 IFSCC
TI INFLUENCE OF ORAL ISOTRETINOINEATMENT ON THE COMPOSITION OF COMEDONAL
LIPIDS. IMPLICATIONS FOR COMEDOGENESIS IN ACNE VULGARIS

L8 ANSWER 6 OF 6 KOSMET COPYRIGHT 2001 IFSCC
TI INFLUENCE OF ORAL ISOTRETINOINEATMENT ON THE COMPOSITION OF COMEDONAL
LIPIDS

=> s glucosamine
L9 21 GLUCOSAMINE

=> s acetyl and L9
120 ACETYL
1 ACETYLS
121 ACETYL
(ACETYL OR ACETYLS)
L10 3 ACETYL AND L9

=> s acetylglucosamine
L11 2 ACETYLGLUCOSAMINE

=> d L10 1-3 ti

L10 ANSWER 1 OF 3 KOSMET COPYRIGHT 2001 IFSCC
TI SKIN CARE TRENDS

L10 ANSWER 2 OF 3 KOSMET COPYRIGHT 2001 IFSCC
TI BENCH & BEYOND: PASS THE SUGAR, PLEASE

L10 ANSWER 3 OF 3 KOSMET COPYRIGHT 2001 IFSCC
TI ULTRASTRUCTURAL LOCALIZATION OF LECTIN BINDING SITES IN HUMAN
MELANOCYTES

=> d L11 1-2 ti

L11 ANSWER 1 OF 2 KOSMET COPYRIGHT 2001 IFSCC
TI CELL CULTURES IN THE PRESENCE OF CHITOSANS AND GAGS

L11 ANSWER 2 OF 2 KOSMET COPYRIGHT 2001 IFSCC
TI CELL AGGLUTINATING ACTIVITY OF A-GLIADIN-RELATED SYNTHETIC PEPTIDES

=> d his

(FILE 'HOME' ENTERED AT 17:03:12 ON 29 JUN 2001)

FILE 'REGISTRY' ENTERED AT 17:03:24 ON 29 JUN 2001
E 2864-50-8/RN

L1 1 S E3
E CHOLESTEROL, HYDROGEN SULFATE
E CHOLESTEROL SULFATE
E CHOLESTERYL SULFATE
L2 23 S CHOLESTEROL AND SULFATE
L3 1 S CHOLESTEROL AND SULFATE AND POTASSIUM

FILE 'KOSMET' ENTERED AT 17:10:38 ON 29 JUN 2001

L4 53 S CHOLESTEROL AND SULFATE
L5 14 S EXFOLIANT
L6 0 S L4 AND L5
L7 443 S RETINOIC OR RETINOID
L8 6 S L4 AND L7
L9 21 S GLUCOSAMINE
L10 3 S ACETYL AND L9
L11 2 S ACETYLGLUCOSAMINE

=> s cholesteryl or cholesterol
58 CHOLESTERYL
190 CHOLESTEROL
1 CHOLESTEROLS
190 CHOLESTEROL
(CHOLESTEROL OR CHOLESTEROLS)
L12 203 CHOLESTERYL OR CHOLESTEROL

=> s sulfate or sulphate
616 SULFATE
120 SULFATES
669 SULFATE

(SULFATE OR SULFATES)
189 SULPHATE
14 SULPHATES
198 SULPHATE

(SULPHATE OR SULPHATES)
L13 751 SULFATE OR SULPHATE

=> s L12(n5)L13
MISSING OPERATOR 'L12(N5'
The search profile that was entered contains terms or
nested terms that are not separated by a logical operator.

=> s L12 n5 L13
MISSING OPERATOR L12 N5
The search profile that was entered contains terms or
nested terms that are not separated by a logical operator.

=> s L12(p)L13
PROXIMITY OPERATOR LEVEL NOT CONSISTENT WITH
FIELD CODE - 'AND' OPERATOR ASSUMED 'L12(P)L13'
L14 61 L12(P)L13

=> s L12 and L13
L15 61 L12 AND L13

=> s L12 (p) L13
PROXIMITY OPERATOR LEVEL NOT CONSISTENT WITH
FIELD CODE - 'AND' OPERATOR ASSUMED 'L12 (P) L13'
L16 61 L12 (P) L13

=> s L12 L13
MISSING OPERATOR L12 L13
The search profile that was entered contains terms or
nested terms that are not separated by a logical operator.

COST IN U.S. DOLLARS	SINCE FILE ENTRY	TOTAL SESSION
FULL ESTIMATED COST	7.60	36.47

FILE 'STNGUIDE' ENTERED AT 17:16:51 ON 29 JUN 2001
USE IS SUBJECT TO THE TERMS OF YOUR CUSTOMER AGREEMENT
COPYRIGHT (C) 2001 AMERICAN CHEMICAL SOCIETY, JAPAN SCIENCE
AND TECHNOLOGY CORPORATION, AND FACHINFORMATIONSZENTRUM KARLSRUHE

FILE CONTAINS CURRENT INFORMATION.
LAST RELOADED: Jun 22, 2001 (20010622/UP).

COST IN U.S. DOLLARS	SINCE FILE ENTRY	TOTAL SESSION
FULL ESTIMATED COST	0.00	36.47

FILE 'KOSMET' ENTERED AT 17:16:59 ON 29 JUN 2001
COPYRIGHT (C) 2001 International Federation of the Societies of Cosmetics
Chemists

FILE LAST UPDATED: 08 JUN 2001 <20010608/UP>
FILE COVERS 1968 TO DATE.

=> d his

(FILE 'HOME' ENTERED AT 17:03:12 ON 29 JUN 2001)

FILE 'REGISTRY' ENTERED AT 17:03:24 ON 29 JUN 2001

E 2864-50-8/RN
L1 1 S E3
E CHOLESTEROL, HYDROGEN SULFATE
E CHOLESTEROL SULFATE
E CHOLESTERYL SULFATE
L2 23 S CHOLESTEROL AND SULFATE
L3 1 S CHOLESTEROL AND SULFATE AND POTASSIUM

FILE 'KOSMET' ENTERED AT 17:10:38 ON 29 JUN 2001

L4 53 S CHOLESTEROL AND SULFATE
L5 14 S EXFOLIANT
L6 0 S L4 AND L5
L7 443 S RETINOIC OR RETINOID
L8 6 S L4 AND L7
L9 21 S GLUCOSAMINE
L10 3 S ACETYL AND L9
L11 2 S ACETYLGALUCOSAMINE
L12 203 S CHOLESTERYL OR CHOLESTEROL
L13 751 S SULFATE OR SULPHATE
L14 61 S L12(P)L13
L15 61 S L12 AND L13
L16 61 S L12 (P) L13

FILE 'STNGUIDE' ENTERED AT 17:16:51 ON 29 JUN 2001

FILE 'KOSMET' ENTERED AT 17:16:59 ON 29 JUN 2001

=> s galactosamine or acetylgalactosamine

6 GALACTOSAMINE
0 ACETYLGALACTOSAMINE
L17 6 GALACTOSAMINE OR ACETYLGALACTOSAMINE

=> s L9 or L17

L18 25 L9 OR L17

=> s L15 and L18

L19 0 L15 AND L18

=> s L15 and exfoliant

7 EXFOLIANT
9 EXFOLIANTS
14 EXFOLIANT
(EXFOLIANT OR EXFOLIANTS)
L20 0 L15 AND EXFOLIANT

=> s L15 and L7

L21 6 L15 AND L7

=> d L21 ti 1-6

L21 ANSWER 1 OF 6 KOSMET COPYRIGHT 2001 IFSCC
TI THE RECONSTRUCTED EPIDERMIS SKINETHIC AS A MODEL FOR STUDYING THE
EFFECTS
OF COMPOUNDS ON EPIDERMAL GROWTH AND/OR DIFFERENTIATION

L21 ANSWER 2 OF 6 KOSMET COPYRIGHT 2001 IFSCC
 TI TECHNICALLY SPEAKING

L21 ANSWER 3 OF 6 KOSMET COPYRIGHT 2001 IFSCC
 TI ACTION OF PHORBOL ESTERS, BRYOSTATINS, AND **RETINOIC ACID** ON
CHOLESTEROL SULFATE SYNTHESIS : RELATION TO THE
 MULTISTEP PROCESS OF DIFFERENTIATION IN HUMAN EPIDERMAL KERATINOCYTES

L21 ANSWER 4 OF 6 KOSMET COPYRIGHT 2001 IFSCC
 TI INCREASED **CHOLESTEROL SULFATE** AND **CHOLESTEROL**
 SULFOTRANSFERASE ACTIVITY IN RELATION TO THE MULTI-STEP PROCESS OF
 DIFFERENTIATION IN HUMAN EPIDERMAL KERATINOCYTES

L21 ANSWER 5 OF 6 KOSMET COPYRIGHT 2001 IFSCC
 TI INFLUENCE OF ORAL ISOTRETINOINEATMENT ON THE COMPOSITION OF COMEDONAL
 LIPIDS. IMPLICATIONS FOR COMEDOGENESIS IN ACNE VULGARIS

L21 ANSWER 6 OF 6 KOSMET COPYRIGHT 2001 IFSCC
 TI INFLUENCE OF ORAL ISOTRETINOINEATMENT ON THE COMPOSITION OF COMEDONAL
 LIPIDS

=> file caplus

COST IN U.S. DOLLARS	SINCE FILE ENTRY	TOTAL SESSION
FULL ESTIMATED COST	4.56	41.03

FILE 'CAPLUS' ENTERED AT 17:20:49 ON 29 JUN 2001
 USE IS SUBJECT TO THE TERMS OF YOUR STN CUSTOMER AGREEMENT.
 PLEASE SEE "HELP USAGETERMS" FOR DETAILS.
 COPYRIGHT (C) 2001 AMERICAN CHEMICAL SOCIETY (ACS)

Copyright of the articles to which records in this database refer is held by the publishers listed in the PUBLISHER (PB) field (available for records published or updated in Chemical Abstracts after December 26, 1996), unless otherwise indicated in the original publications.

FILE COVERS 1947 - 29 Jun 2001 VOL 135 ISS 2
 FILE LAST UPDATED: 28 Jun 2001 (20010628/ED)

This file contains CAS Registry Numbers for easy and accurate substance identification.

This file supports REGISTRY for direct browsing and searching of all substance data from the REGISTRY file. Enter HELP FIRST for more information.

CAplus now provides online access to patents and literature covered in CA from 1947 to the present. On April 22, 2001, bibliographic information and abstracts were added for over 2.2 million references published in CA from 1947 to 1966.

The CA Lexicon is now available in the Controlled Term (/CT) field. Enter HELP LEXICON for full details.

Attention, the CA Lexicon is the copyrighted intellectual property of the American Chemical Society and is provided to assist you in searching databases on STN. Any dissemination, distribution, copying, or storing of this information, without the prior written consent of

CAS, is strictly prohibited.

=> d his

(FILE 'HOME' ENTERED AT 17:03:12 ON 29 JUN 2001)

FILE 'REGISTRY' ENTERED AT 17:03:24 ON 29 JUN 2001

E 2864-50-8/RN
L1 1 S E3
E CHOLESTEROL, HYDROGEN SULFATE
E CHOLESTEROL SULFATE
E CHOLESTERYL SULFATE
L2 23 S CHOLESTEROL AND SULFATE
L3 1 S CHOLESTEROL AND SULFATE AND POTASSIUM

FILE 'KOSMET' ENTERED AT 17:10:38 ON 29 JUN 2001

L4 53 S CHOLESTEROL AND SULFATE
L5 14 S EXFOLIANT
L6 0 S L4 AND L5
L7 443 S RETINOIC OR RETINOID
L8 6 S L4 AND L7
L9 21 S GLUCOSAMINE
L10 3 S ACETYL AND L9
L11 2 S ACETYLGLUCOSAMINE
L12 203 S CHOLESTERYL OR CHOLESTEROL
L13 751 S SULFATE OR SULPHATE
L14 61 S L12(P)L13
L15 61 S L12 AND L13
L16 61 S L12 (P) L13

FILE 'STNGUIDE' ENTERED AT 17:16:51 ON 29 JUN 2001

FILE 'KOSMET' ENTERED AT 17:16:59 ON 29 JUN 2001

L17 6 S GALACTOSAMINE OR ACETYLGALACTOSAMINE
L18 25 S L9 OR L17
L19 0 S L15 AND L18
L20 0 S L15 AND EXFOLIANT
L21 6 S L15 AND L7

FILE 'CAPLUS' ENTERED AT 17:20:49 ON 29 JUN 2001

=> s L1 and L3

33 L1
12 L3
L22 5 L1 AND L3

=> s L1 or L3

33 L1
12 L3
L23 40 L1 OR L3

=> d L23 ti 1-40

L23 ANSWER 1 OF 40 CAPLUS COPYRIGHT 2001 ACS
TI Use of ceramides for limiting the penetration in the skin or in keratin fibers of a cosmetic or pharmaceutical agent

L23 ANSWER 2 OF 40 CAPLUS COPYRIGHT 2001 ACS
TI Effects of Ca²⁺ ion and limonene on the fusion of stratum corneum lipid liposomes

- L23 ANSWER 3 OF 40 CAPLUS COPYRIGHT 2001 ACS
TI Kit for preparation of liposome compositions at the time of use
- L23 ANSWER 4 OF 40 CAPLUS COPYRIGHT 2001 ACS
TI A new mild PTSA-catalyzed method for sulfate ester hydrolysis and acid-catalyzed rearrangement of 12-acetyl-diene-11-ol tetracyclic triterpenoids involving an angular methyl migration
- L23 ANSWER 5 OF 40 CAPLUS COPYRIGHT 2001 ACS
TI Cholesterol sulfate compositions for enhancement of stratum corneum function
- L23 ANSWER 6 OF 40 CAPLUS COPYRIGHT 2001 ACS
TI Polyglyceryl oleate surfactants and the stratum corneum lipid
- L23 ANSWER 7 OF 40 CAPLUS COPYRIGHT 2001 ACS
TI Use of sterol sulfates in cosmetic and/or pharmaceutical compositions for inhibiting serine proteases
- L23 ANSWER 8 OF 40 CAPLUS COPYRIGHT 2001 ACS
TI Complexes of N'-dimethylaminoacetylpartricin A dimethylaminoethylamide, or the salts thereof, and cholesterol 3-sulfate
- L23 ANSWER 9 OF 40 CAPLUS COPYRIGHT 2001 ACS
TI Ionizable congeners of aromatic and aliphatic alcohols as antileukemia agents and cytoprotectants
- L23 ANSWER 10 OF 40 CAPLUS COPYRIGHT 2001 ACS
TI Glycerophosphate dehydrogenase inhibitors and food additives and foods containing them
- L23 ANSWER 11 OF 40 CAPLUS COPYRIGHT 2001 ACS
TI Complex Lamellar Structure of Polyoxyethylene 20 Sorbitan Oleate and a Fatty Acid/Lecithin Lamellar Liquid Crystal
- L23 ANSWER 12 OF 40 CAPLUS COPYRIGHT 2001 ACS
TI Negative electrospray ionization mass spectrometry analysis of gangliosides, sulfatides and cholesterol 3-sulfate
- L23 ANSWER 13 OF 40 CAPLUS COPYRIGHT 2001 ACS
TI Cosmetic compositions containing aqueous dispersion of stabilized vesicles of amphiphilic non-ionic lipids
- L23 ANSWER 14 OF 40 CAPLUS COPYRIGHT 2001 ACS
TI Biosynthetic studies of marine lipids. 42. Biosynthesis of steroid and triterpenoid metabolites in the sea cucumber *Eupentacta fraudatrix*
- L23 ANSWER 15 OF 40 CAPLUS COPYRIGHT 2001 ACS
TI Method of preventing chlorohydrocarbon toxicity using sterol and other alcohol derivatives
- L23 ANSWER 16 OF 40 CAPLUS COPYRIGHT 2001 ACS
TI Cosmetics containing ginseng extract and cholesterol derivatives
- L23 ANSWER 17 OF 40 CAPLUS COPYRIGHT 2001 ACS
TI Nail preparations containing glycolipids

L23 ANSWER 18 OF 40 CAPLUS COPYRIGHT 2001 ACS
TI Pharmaceutical liposomes for solid tumor treatment

L23 ANSWER 19 OF 40 CAPLUS COPYRIGHT 2001 ACS
TI Lipophilic complexes of pharmacologically active inorganic mineral acid esters of organic compounds

L23 ANSWER 20 OF 40 CAPLUS COPYRIGHT 2001 ACS
TI Novel antifungal drug delivery: stable amphotericin B-cholesteryl sulfate disks

L23 ANSWER 21 OF 40 CAPLUS COPYRIGHT 2001 ACS
TI Hair wave-setting preparations containing cholesteryl sulfate and/or its salts

L23 ANSWER 22 OF 40 CAPLUS COPYRIGHT 2001 ACS
TI Nonphospholipid pharmaceutical liposomes

L23 ANSWER 23 OF 40 CAPLUS COPYRIGHT 2001 ACS
TI Nail lacquers containing cholesteryl sulfates

L23 ANSWER 24 OF 40 CAPLUS COPYRIGHT 2001 ACS
TI Hair preparations containing cholesteryl sulfate

L23 ANSWER 25 OF 40 CAPLUS COPYRIGHT 2001 ACS
TI Effects of cholesteryl esters on the accessibility of LH/hCG receptors and membrane lipid fluidity in rat testes

L23 ANSWER 26 OF 40 CAPLUS COPYRIGHT 2001 ACS
TI Complexes of lipophilic compounds with nonlipophilic ionic pharmaceutically active agents

L23 ANSWER 27 OF 40 CAPLUS COPYRIGHT 2001 ACS
TI Pharmaceutical particles containing Amphotericin B and cholesterol sulfate

L23 ANSWER 28 OF 40 CAPLUS COPYRIGHT 2001 ACS
TI Dispersions of cholesterol sulfate-containing lipid spherules in an aqueous medium

L23 ANSWER 29 OF 40 CAPLUS COPYRIGHT 2001 ACS
TI Sterol side-chain cleavage by immobilized Moraxella sp.: a continuous transformation

L23 ANSWER 30 OF 40 CAPLUS COPYRIGHT 2001 ACS
TI Biosynthesis of asterosaponins from cholesterol and other sterols in sea star gonad and liver homogenates in vitro

L23 ANSWER 31 OF 40 CAPLUS COPYRIGHT 2001 ACS
TI Cosmetics containing cholesteryl sulfates

L23 ANSWER 32 OF 40 CAPLUS COPYRIGHT 2001 ACS
TI Microbial oxidation of sterol side-chains

L23 ANSWER 33 OF 40 CAPLUS COPYRIGHT 2001 ACS
TI Direct analysis of steroid conjugates: the use of secondary ion mass spectrometry

- L23 ANSWER 34 OF 40 CAPLUS COPYRIGHT 2001 ACS
TI Studies on steroids. Part CXXXXV. Synthesis of conjugated cholesterol and cholestanols
- L23 ANSWER 35 OF 40 CAPLUS COPYRIGHT 2001 ACS
TI Recognition of functional groups by chemical ionization mass spectrometry
- L23 ANSWER 36 OF 40 CAPLUS COPYRIGHT 2001 ACS
TI Raman spectroscopic studies of different forms of cholesterol and its derivatives in th crystalline state
- L23 ANSWER 37 OF 40 CAPLUS COPYRIGHT 2001 ACS
TI Metal ion-catalyzed oxidation of steroids. IV. Autoxidation of cholesterol in aqueous colloidal dispersions with different detergents
- L23 ANSWER 38 OF 40 CAPLUS COPYRIGHT 2001 ACS
TI Sulfation of cholesterol in rat kidney and liver
- L23 ANSWER 39 OF 40 CAPLUS COPYRIGHT 2001 ACS
TI Solvolysis of some potassium steryl sulfates by methanol/boron trifluoride and dimethyl sulfoxide
- L23 ANSWER 40 OF 40 CAPLUS COPYRIGHT 2001 ACS
TI Uncoupling of oxidative phosphorylation by glycyrrhetic acid, fusidic acid, and some related triterpenoid acids

=> d 23 31 kwic

- L23 ANSWER 23 OF 40 CAPLUS COPYRIGHT 2001 ACS
IT 1256-86-6, Cholesteryl sulfate 2864-50-8 6614-96-6
99523-97-4 127565-98-4
RL: BIOL (Biological study)
(nail lacquers contg., for damaged nail)
- L23 ANSWER 31 OF 40 CAPLUS COPYRIGHT 2001 ACS
IT 1256-86-6 2864-50-8 99523-97-4 99534-14-2
RL: BIOL (Biological study)
(skin cosmetics contg.)

=> d L23 31 abs

- L23 ANSWER 31 OF 40 CAPLUS COPYRIGHT 2001 ACS
AB Cosmetics contain cholesteryl sulfate [1256-86-6] and(or) its salts (0.01-5.0% by wt.). Application of the cosmetics to the skin hold moisture for a long period. Thus, beeswax 2.0, stearic acid 5.0, stearyl alc. 3.0, reduced lanolin 2.0, squalane 15.0, polyoxyethylene sorbitan monostearate 3.0, sorbitan monostearate 3.0, and cholesteryl sulfate 0.5% by wt. were mixed at 80.degree. and then combined with a mixt. of propylene glycol 5.0, preservative 0.2 and H2O 61.25% by wt. After the mixt. was cooled to 50.degree., 0.05% by wt. perfume was added.

=> d L23 31 ibib

- L23 ANSWER 31 OF 40 CAPLUS COPYRIGHT 2001 ACS
ACCESSION NUMBER: 1986:10400 CAPLUS
DOCUMENT NUMBER: 104:10400

TITLE: Cosmetics containing cholesteryl sulfates
 INVENTOR(S): Abe, Takashi; Miyamoto, Tatsu; Maeno, Kiyoshi
 PATENT ASSIGNEE(S): Kanebo, Ltd., Japan
 SOURCE: Jpn. Kokai Tokkyo Koho, 7 pp.
 CODEN: JKXXAF
 DOCUMENT TYPE: Patent
 LANGUAGE: Japanese
 FAMILY ACC. NUM. COUNT: 1
 PATENT INFORMATION:

PATENT NO.	KIND	DATE	APPLICATION NO.	DATE
JP 60161911	A2	19850823	JP 1984-16238	19840131
JP 62041684	B4	19870904		

=> file registry

COST IN U.S. DOLLARS	SINCE FILE ENTRY	TOTAL SESSION
FULL ESTIMATED COST	16.24	57.27
DISCOUNT AMOUNTS (FOR QUALIFYING ACCOUNTS)	SINCE FILE ENTRY	TOTAL SESSION
CA SUBSCRIBER PRICE	-0.59	-0.59

FILE 'REGISTRY' ENTERED AT 17:25:20 ON 29 JUN 2001
 USE IS SUBJECT TO THE TERMS OF YOUR STN CUSTOMER AGREEMENT.
 PLEASE SEE "HELP USAGETERMS" FOR DETAILS.
 COPYRIGHT (C) 2001 American Chemical Society (ACS)

STRUCTURE FILE UPDATES: 28 JUN 2001 HIGHEST RN 343921-18-6
 DICTIONARY FILE UPDATES: 28 JUN 2001 HIGHEST RN 343921-18-6

TSCA INFORMATION NOW CURRENT THROUGH January 11, 2001

Please note that search-term pricing does apply when
 conducting SmartSELECT searches.

Structure search limits have been increased. See HELP SLIMIT
 for details.

=> e acetylglucosamine

E1	1	ACETYLGLUCOSAMIDASE/BI
E2	542	ACETYLGLUCOSAMIN/BI
E3	898	--> ACETYLGLUCOSAMINE/BI
E4	3	ACETYLGLUCOSAMINE:.ALPHA./BI
E5	1	ACETYLGLUCOSAMINE:.ALPHA.1,3/BI
E6	2	ACETYLGLUCOSAMINE:.BETA./BI
E7	1	ACETYLGLUCOSAMINE:DOLICHOL/BI
E8	5	ACETYLGLUCOSAMINE:DOLICHYL/BI
E9	1	ACETYLGLUCOSAMINE:FUCOSYLGLYCOPROTEIN/BI
E10	1	ACETYLGLUCOSAMINE:GLYCOPROTEIN/BI
E11	1	ACETYLGLUCOSAMINE:HEPARAN/BI
E12	1	ACETYLGLUCOSAMINE:K5/BI

=> e N-acetyl-D-glucosamine

E1	13	N,W,L1,U1/BI
E2	2	N,X,S1,C2/BI
E3	0	--> N-ACETYL-D-GLUCOSAMINE/BI
E4	1	

N-METHYL-L-ALANYL-2-HYDROXYPROPANOYL-N-METHYL-L-ALANYL-3-PHE

NYL-2-HYDROXYPROPANOYL-N-METHYL-L-ALANYL-2-HYDROXYPROPANOYL-
 N-METHYL-L-ALANYL-3-PHENYL-2-HYDROXYPROPANOYL/BI
 E5 1 N-METHYLCUMIDINE/BI
 E6 1 N-PROPYLPIPERIDINE/BI
 E7 3940 N.ALPHA./BI
 E8 1 N.ALPHA.'/BI
 E9 1 N.ALPHA.',N.EPSILON.'/BI
 E10 4 N.ALPHA.,.ALPHA./BI
 E11 1 N.ALPHA.,1/BI
 E12 1 N.ALPHA.,1,3/BI

=> e N-acetylglucosamine

E1 13 N,W,L1,U1/BI
 E2 2 N,X,S1,C2/BI
 E3 0 --> N-ACETYLGLUCOSAMINE/BI
 E4 1
 N-METHYL-L-ALANYL-2-HYDROXYPROPANOYL-N-METHYL-L-ALANYL-3-PHE

NYL-2-HYDROXYPROPANOYL-N-METHYL-L-ALANYL-2-HYDROXYPROPANOYL-
 N-METHYL-L-ALANYL-3-PHENYL-2-HYDROXYPROPANOYL/BI
 E5 1 N-METHYLCUMIDINE/BI
 E6 1 N-PROPYLPIPERIDINE/BI
 E7 3940 N.ALPHA./BI
 E8 1 N.ALPHA.'/BI
 E9 1 N.ALPHA.',N.EPSILON.'/BI
 E10 4 N.ALPHA.,.ALPHA./BI
 E11 1 N.ALPHA.,1/BI
 E12 1 N.ALPHA.,1,3/BI

=> e glucosamine, N-acetyl

E1 4 GLUCOSAMINATE/BI
 E2 1570 GLUCOSAMINE/BI
 E3 0 --> GLUCOSAMINE, N-ACETYL/BI
 E4 1 GLUCOSAMINEGLICANE/BI
 E5 20 GLUCOSAMINEPHOSPH/BI
 E6 20 GLUCOSAMINEPHOSPHATE/BI
 E7 3 GLUCOSAMINETRANSFER/BI
 E8 3 GLUCOSAMINETRANSFERASE/BI
 E9 1 GLUCOSAMINI/BI
 E10 1 GLUCOSAMINIASE/BI
 E11 4 GLUCOSAMINIC/BI
 E12 113 GLUCOSAMINID/BI

=> s E2 and acetyl

 1570 GLUCOSAMINE/BI
 869716 ACETYL
 53 ACETYLS
 869716 ACETYL
 (ACETYL OR ACETYLS)
 L24 1061 GLUCOSAMINE/BI AND ACETYL

=> s L24 and acetylglucosamine

 898 ACETYLGLUCOSAMINE
 L25 898 L24 AND ACETYLGLUCOSAMINE

=> e acetylglucosamine

E1 1 ACETYLGLUCOSAMIDASE/BI
 E2 542 ACETYLGLUCOSAMIN/BI
 E3 898 --> ACETYLGLUCOSAMINE/BI

E4 3 ACETYLGLUCOSAMINE:.ALPHA./BI
E5 1 ACETYLGLUCOSAMINE:.ALPHA.1,3/BI
E6 2 ACETYLGLUCOSAMINE:.BETA./BI
E7 1 ACETYLGLUCOSAMINE:DOLICHOL/BI
E8 5 ACETYLGLUCOSAMINE:DOLICHL/BI
E9 1 ACETYLGLUCOSAMINE:FUCOSYLGLYCOPROTEIN/BI
E10 1 ACETYLGLUCOSAMINE:GLYCOPROTEIN/BI
E11 1 ACETYLGLUCOSAMINE:HEPARAN/BI
E12 1 ACETYLGLUCOSAMINE:K5/BI

=> d his

(FILE 'HOME' ENTERED AT 17:03:12 ON 29 JUN 2001)

FILE 'REGISTRY' ENTERED AT 17:03:24 ON 29 JUN 2001

E 2864-50-8/RN
L1 1 S E3
E CHOLESTEROL, HYDROGEN SULFATE
E CHOLESTEROL SULFATE
E CHOLESTERYL SULFATE
L2 23 S CHOLESTEROL AND SULFATE
L3 1 S CHOLESTEROL AND SULFATE AND POTASSIUM

FILE 'KOSMET' ENTERED AT 17:10:38 ON 29 JUN 2001

L4 53 S CHOLESTEROL AND SULFATE
L5 14 S EXFOLIANT
L6 0 S L4 AND L5
L7 443 S RETINOIC OR RETINOID
L8 6 S L4 AND L7
L9 21 S GLUCOSAMINE
L10 3 S ACETYL AND L9
L11 2 S ACETYLGLUCOSAMINE
L12 203 S CHOLESTERYL OR CHOLESTEROL
L13 751 S SULFATE OR SULPHATE
L14 61 S L12(P)L13
L15 61 S L12 AND L13
L16 61 S L12 (P) L13

FILE 'STNGUIDE' ENTERED AT 17:16:51 ON 29 JUN 2001

FILE 'KOSMET' ENTERED AT 17:16:59 ON 29 JUN 2001

L17 6 S GALACTOSAMINE OR ACETYLGALACTOSAMINE
L18 25 S L9 OR L17
L19 0 S L15 AND L18
L20 0 S L15 AND EXFOLIANT
L21 6 S L15 AND L7

FILE 'CAPLUS' ENTERED AT 17:20:49 ON 29 JUN 2001

L22 5 S L1 AND L3
L23 40 S L1 OR L3

FILE 'REGISTRY' ENTERED AT 17:25:20 ON 29 JUN 2001

E ACETYLGLUCOSAMINE
E N-ACETYL-D-GLUCOSAMINE
E N-ACETYLGLUCOSAMINE
E GLUCOSAMINE, N-ACETYL
L24 1061 S E2 AND ACETYL
L25 898 S L24 AND ACETYLGLUCOSAMINE
E ACETYLGLUCOSAMINE

=> e acetylgalactosamine

E1	400	ACETYLGALACTOS/BI
E2	184	ACETYLGALACTOSAMIN/BI
E3	256	--> ACETYLGALACTOSAMINE/BI
E4	1	ACETYLGALACTOSAMINE:.ALPHA./BI
E5	1	ACETYLGALACTOSAMINE:PEPTIDE/BI
E6	7	ACETYLGALACTOSAMINE:POLYPEPTIDE/BI
E7	1	ACETYLGALACTOSAMINE:PROTEIN/BI
E8	1	ACETYLGALACTOSAMINETRANSFER/BI
E9	1	ACETYLGALACTOSAMINETRANSFERASE/BI
E10	34	ACETYLGALACTOSAMINID/BI
E11	34	ACETYLGALACTOSAMINIDASE/BI
E12	62	ACETYLGALACTOSAMINIDE/BI

=> e N-acetylgalactosamine

E1	13	N,W,L1,U1/BI
E2	2	N,X,S1,C2/BI
E3	0	--> N-ACETYLGALACTOSAMINE/BI
E4	1	

N-METHYL-L-ALANYL-2-HYDROXYPROPANOYL-N-METHYL-L-ALANYL-3-PHE

NYL-2-HYDROXYPROPANOYL-N-METHYL-L-ALANYL-2-HYDROXYPROPANOYL-
N-METHYL-L-ALANYL-3-PHENYL-2-HYDROXYPROPANOYL/BI

E5	1	N-METHYLCUMIDINE/BI
E6	1	N-PROPYLPIPERIDINE/BI
E7	3940	N.ALPHA./BI
E8	1	N.ALPHA.'/BI
E9	1	N.ALPHA.',N.EPSILON.'/BI
E10	4	N.ALPHA.,.ALPHA./BI
E11	1	N.ALPHA.,1/BI
E12	1	N.ALPHA.,1,3/BI

=> e acetylgalactosamine, N

E1	184	ACETYLGALACTOSAMIN/BI
E2	256	ACETYLGALACTOSAMINE/BI
E3	0	--> ACETYLGALACTOSAMINE, N/BI
E4	1	ACETYLGALACTOSAMINE:.ALPHA./BI
E5	1	ACETYLGALACTOSAMINE:PEPTIDE/BI
E6	7	ACETYLGALACTOSAMINE:POLYPEPTIDE/BI
E7	1	ACETYLGALACTOSAMINE:PROTEIN/BI
E8	1	ACETYLGALACTOSAMINETRANSFER/BI
E9	1	ACETYLGALACTOSAMINETRANSFERASE/BI
E10	34	ACETYLGALACTOSAMINID/BI
E11	34	ACETYLGALACTOSAMINIDASE/BI
E12	62	ACETYLGALACTOSAMINIDE/BI

=> s e2

L26 256 ACETYLGALACTOSAMINE/BI

=> s L26(w) "N"

3661972 "N"

L27 3 L26(W) "N"

=> d L27 1-3

L27 ANSWER 1 OF 3 REGISTRY COPYRIGHT 2001 ACS

RN 163441-55-2 REGISTRY

CN **Acetylgalactosaminyltransferase, uridine diphosphoacetylgalactosamine-
N-acetylgalactosaminide .beta.-1,4-N- (9CI) (CA INDEX NAME)**

OTHER NAMES:

CN N-Acetylgalactosaminide .beta.-1,4-N-acetylgalactosaminyltransferase
MF Unspecified
CI MAN
SR CA
LC STN Files: CA, CAPLUS, USPATFULL

*** STRUCTURE DIAGRAM IS NOT AVAILABLE ***

3 REFERENCES IN FILE CA (1967 TO DATE)
1 REFERENCES TO NON-SPECIFIC DERIVATIVES IN FILE CA
3 REFERENCES IN FILE CAPLUS (1967 TO DATE)

L27 ANSWER 2 OF 3 REGISTRY COPYRIGHT 2001 ACS
RN 134010-03-0 REGISTRY
CN **Acetylgalactosamine-1-phosphotransferase, uridine
diphosphoacetylgalactosamine-N-cadherin (9CI) (CA INDEX NAME)**
OTHER NAMES:
CN N-Cadherin acetylgalactosamine-1-phosphotransferase
CN Neurocan acetylgalactosaminylphosphotransferase
MF Unspecified
CI MAN
SR CA
LC STN Files: CA, CAPLUS, TOXLIT

*** STRUCTURE DIAGRAM IS NOT AVAILABLE ***

9 REFERENCES IN FILE CA (1967 TO DATE)
9 REFERENCES IN FILE CAPLUS (1967 TO DATE)

L27 ANSWER 3 OF 3 REGISTRY COPYRIGHT 2001 ACS
RN 67338-98-1 REGISTRY
CN Acetylgalactosaminyltransferase, uridine diphosphoacetylgalactosamine-
ganglioside GM3 (9CI) (CA INDEX NAME)
OTHER NAMES:
CN .beta.-1,4-N-Acetylgalactosaminyltransferase
CN E.C. 2.4.1.92
CN GalNAc
CN Ganglioside GD3/GM3 .beta.-1,4-N-acetylgalactosaminyltransferase
CN Ganglioside GM2 synthase
CN Ganglioside GM2/GD2 synthase
CN Ganglioside GM3 acetylgalactosaminyltransferase
CN GM2 synthase
CN GM3 N-acetylgalactosaminyltransferase
CN **UDP acetylgalactosamine-(N-acetylneuraminyl)-D-galactosyl-D-
glucosylceramide acetylgalactosaminyltransferase**
CN UPD-N-acetylgalactosamine GM3 N-acetylgalactosaminyltransferase
CN Uridine
diphosphoacetylgalactosamine-acetylneuraminylgalactosylglucosylcer
amide acetylgalactosaminyltransferase
CN Uridine diphosphoacetylgalactosamine-hematoside
acetylgalactosaminyltransferase
DR 60202-13-3, 72561-00-3
MF Unspecified
CI MAN
LC STN Files: AGRICOLA, BIOSIS, CA, CAPLUS, TOXLIT, USPATFULL

*** STRUCTURE DIAGRAM IS NOT AVAILABLE ***

115 REFERENCES IN FILE CA (1967 TO DATE)
115 REFERENCES IN FILE CAPLUS (1967 TO DATE)

=> d his

(FILE 'HOME' ENTERED AT 17:03:12 ON 29 JUN 2001)

FILE 'REGISTRY' ENTERED AT 17:03:24 ON 29 JUN 2001

E 2864-50-8/RN
L1 1 S E3
E CHOLESTEROL, HYDROGEN SULFATE
E CHOLESTEROL SULFATE
E CHOLESTERYL SULFATE
L2 23 S CHOLESTEROL AND SULFATE
L3 1 S CHOLESTEROL AND SULFATE AND POTASSIUM

FILE 'KOSMET' ENTERED AT 17:10:38 ON 29 JUN 2001

L4 53 S CHOLESTEROL AND SULFATE
L5 14 S EXFOLIANT
L6 0 S L4 AND L5
L7 443 S RETINOIC OR RETINOID
L8 6 S L4 AND L7
L9 21 S GLUCOSAMINE
L10 3 S ACETYL AND L9
L11 2 S ACETYLGUCOSAMINE
L12 203 S CHOLESTERYL OR CHOLESTEROL
L13 751 S SULFATE OR SULPHATE
L14 61 S L12(P)L13
L15 61 S L12 AND L13
L16 61 S L12 (P) L13

FILE 'STNGUIDE' ENTERED AT 17:16:51 ON 29 JUN 2001

FILE 'KOSMET' ENTERED AT 17:16:59 ON 29 JUN 2001

L17 6 S GALACTOSAMINE OR ACETYLGALACTOSAMINE
L18 25 S L9 OR L17
L19 0 S L15 AND L18
L20 0 S L15 AND EXFOLIANT
L21 6 S L15 AND L7

FILE 'CAPLUS' ENTERED AT 17:20:49 ON 29 JUN 2001

L22 5 S L1 AND L3
L23 40 S L1 OR L3

FILE 'REGISTRY' ENTERED AT 17:25:20 ON 29 JUN 2001

E ACETYLGUCOSAMINE
E N-ACETYL-D-GLUCOSAMINE
E N-ACETYLGUCOSAMINE
E GLUCOSAMINE, N-ACETYL
L24 1061 S E2 AND ACETYL
L25 898 S L24 AND ACETYLGUCOSAMINE
E ACETYLGUCOSAMINE
E ACETYLGALACTOSAMINE
E N-ACETYLGALACTOSAMINE
E ACETYLGALACTOSAMINE, N
L26 256 S E2
L27 3 S L26(W) "N"

=> file stng

COST IN U.S. DOLLARS

SINCE FILE
ENTRY
27.53

TOTAL
SESSION
84.80

FULL ESTIMATED COST

DISCOUNT AMOUNTS (FOR QUALIFYING ACCOUNTS)

SINCE FILE

TOTAL

CA SUBSCRIBER PRICE	ENTRY 0.00	SESSION -0.59
---------------------	---------------	------------------

FILE 'STNGUIDE' ENTERED AT 17:33:01 ON 29 JUN 2001
 USE IS SUBJECT TO THE TERMS OF YOUR CUSTOMER AGREEMENT
 COPYRIGHT (C) 2001 AMERICAN CHEMICAL SOCIETY, JAPAN SCIENCE
 AND TECHNOLOGY CORPORATION, AND FACHINFORMATIONSZENTRUM KARLSRUHE

FILE CONTAINS CURRENT INFORMATION.
 LAST RELOADED: Jun 22, 2001 (20010622/UP).

=> file registry		
COST IN U.S. DOLLARS	SINCE FILE	TOTAL
	ENTRY	SESSION
FULL ESTIMATED COST	0.00	84.80
DISCOUNT AMOUNTS (FOR QUALIFYING ACCOUNTS)	SINCE FILE	TOTAL
	ENTRY	SESSION
CA SUBSCRIBER PRICE	0.00	-0.59

FILE 'REGISTRY' ENTERED AT 17:39:07 ON 29 JUN 2001
 USE IS SUBJECT TO THE TERMS OF YOUR STN CUSTOMER AGREEMENT.
 PLEASE SEE "HELP USAGETERMS" FOR DETAILS.
 COPYRIGHT (C) 2001 American Chemical Society (ACS)

STRUCTURE FILE UPDATES: 28 JUN 2001 HIGHEST RN 343921-18-6
 DICTIONARY FILE UPDATES: 28 JUN 2001 HIGHEST RN 343921-18-6

TSCA INFORMATION NOW CURRENT THROUGH January 11, 2001

Please note that search-term pricing does apply when
 conducting SmartSELECT searches.

Structure search limits have been increased. See HELP SLIMIT
 for details.

=> s 7512-17-6/rn
 L28 1 7512-17-6/RN

=> s 1811-31-0/rn
 L29 1 1811-31-0/RN

=> d his

(FILE 'HOME' ENTERED AT 17:03:12 ON 29 JUN 2001)

FILE 'REGISTRY' ENTERED AT 17:03:24 ON 29 JUN 2001
 E 2864-50-8/RN
 L1 1 S E3
 E CHOLESTEROL, HYDROGEN SULFATE
 E CHOLESTEROL SULFATE
 E CHOLESTERYL SULFATE
 L2 23 S CHOLESTEROL AND SULFATE
 L3 1 S CHOLESTEROL AND SULFATE AND POTASSIUM

FILE 'KOSMET' ENTERED AT 17:10:38 ON 29 JUN 2001
 L4 53 S CHOLESTEROL AND SULFATE
 L5 14 S EXFOLIANT
 L6 0 S L4 AND L5
 L7 443 S RETINOIC OR RETINOID

L8 6 S L4 AND L7
 L9 21 S GLUCOSAMINE
 L10 3 S ACETYL AND L9
 L11 2 S ACETYLGLUCOSAMINE
 L12 203 S CHOLESTERYL OR CHOLESTEROL
 L13 751 S SULFATE OR SULPHATE
 L14 61 S L12(P)L13
 L15 61 S L12 AND L13
 L16 61 S L12 (P) L13

FILE 'STNGUIDE' ENTERED AT 17:16:51 ON 29 JUN 2001

FILE 'KOSMET' ENTERED AT 17:16:59 ON 29 JUN 2001
 L17 6 S GALACTOSAMINE OR ACETYLGALACTOSAMINE
 L18 25 S L9 OR L17
 L19 0 S L15 AND L18
 L20 0 S L15 AND EXFOLIANT
 L21 6 S L15 AND L7

FILE 'CAPLUS' ENTERED AT 17:20:49 ON 29 JUN 2001
 L22 5 S L1 AND L3
 L23 40 S L1 OR L3

FILE 'REGISTRY' ENTERED AT 17:25:20 ON 29 JUN 2001
 E ACETYLGALACTOSAMINE
 E N-ACETYL-D-GLUCOSAMINE
 E N-ACETYLGALACTOSAMINE
 E GLUCOSAMINE, N-ACETYL
 L24 1061 S E2 AND ACETYL
 L25 898 S L24 AND ACETYLGALACTOSAMINE
 E ACETYLGALACTOSAMINE
 E ACETYLGALACTOSAMINE
 E N-ACETYLGALACTOSAMINE
 E ACETYLGALACTOSAMINE, N
 L26 256 S E2
 L27 3 S L26(W) "N"

FILE 'STNGUIDE' ENTERED AT 17:33:01 ON 29 JUN 2001

FILE 'REGISTRY' ENTERED AT 17:39:07 ON 29 JUN 2001
 L28 1 S 7512-17-6/RN
 L29 1 S 1811-31-0/RN

=> file caplus			
COST IN U.S. DOLLARS		SINCE FILE	TOTAL
		ENTRY	SESSION
FULL ESTIMATED COST		0.62	85.42
DISCOUNT AMOUNTS (FOR QUALIFYING ACCOUNTS)		SINCE FILE	TOTAL
		ENTRY	SESSION
CA SUBSCRIBER PRICE		0.00	-0.59

FILE 'CAPLUS' ENTERED AT 17:40:25 ON 29 JUN 2001
 USE IS SUBJECT TO THE TERMS OF YOUR STN CUSTOMER AGREEMENT.
 PLEASE SEE "HELP USAGETERMS" FOR DETAILS.
 COPYRIGHT (C) 2001 AMERICAN CHEMICAL SOCIETY (ACS)

Copyright of the articles to which records in this database refer is held by the publishers listed in the PUBLISHER (PB) field (available

for records published or updated in Chemical Abstracts after December 26, 1996), unless otherwise indicated in the original publications.

FILE COVERS 1947 - 29 Jun 2001 VOL 135 ISS 2
FILE LAST UPDATED: 28 Jun 2001 (20010628/ED)

This file contains CAS Registry Numbers for easy and accurate substance identification.

This file supports REGISTRY for direct browsing and searching of all substance data from the REGISTRY file. Enter HELP FIRST for more information.

CAPLUS now provides online access to patents and literature covered in CA from 1947 to the present. On April 22, 2001, bibliographic information and abstracts were added for over 2.2 million references published in CA from 1947 to 1966.

The CA Lexicon is now available in the Controlled Term (/CT) field. Enter HELP LEXICON for full details.

Attention, the CA Lexicon is the copyrighted intellectual property of the American Chemical Society and is provided to assist you in searching databases on STN. Any dissemination, distribution, copying, or storing of this information, without the prior written consent of CAS, is strictly prohibited.

```
=> s L1 or L3
          33 L1
          12 L3
L30      40 L1 OR L3
```

```
=> s L28 or L29
          4461 L28
          2321 L29
L31      5506 L28 OR L29
```

```
=> s L30 and L31
L32      0 L30 AND L31
```

```
=> s L30 and exfoliant
          17 EXFOLIANT
          6 EXFOLIANTS
          20 EXFOLIANT
          (EXFOLIANT OR EXFOLIANTS)
L33      0 L30 AND EXFOLIANT
```

```
=> d L23 ti 13,16,23,24,31
```

```
L23 ANSWER 13 OF 40 CAPLUS COPYRIGHT 2001 ACS
TI   Cosmetic compositions containing aqueous dispersion of stabilized
vesicles
      of amphiphilic non-ionic lipids
```

```
L23 ANSWER 16 OF 40 CAPLUS COPYRIGHT 2001 ACS
TI   Cosmetics containing ginseng extract and cholesterol derivatives
```

```
L23 ANSWER 23 OF 40 CAPLUS COPYRIGHT 2001 ACS
TI   Nail lacquers containing cholesteryl sulfates
```

L23 ANSWER 24 OF 40 CAPLUS COPYRIGHT 2001 ACS
TI Hair preparations containing cholesteryl sulfate

L23 ANSWER 31 OF 40 CAPLUS COPYRIGHT 2001 ACS
TI Cosmetics containing cholesteryl sulfates

=> d L23 13,16,23,24,31 ibib

L23 ANSWER 13 OF 40 CAPLUS COPYRIGHT 2001 ACS
ACCESSION NUMBER: 1994:226511 CAPLUS
DOCUMENT NUMBER: 120:226511
TITLE: Cosmetic compositions containing aqueous dispersion
of
stabilized vesicles of amphiphilic non-ionic lipids
INVENTOR(S): Ribier, Alain; Simonnet, Jean Thierry; Handjani, Rose
Marie; Terren, Nadia
PATENT ASSIGNEE(S): Oreal S. A., Fr.
SOURCE: Eur. Pat. Appl., 33 pp.
CODEN: EPXXDW
DOCUMENT TYPE: Patent
LANGUAGE: French
FAMILY ACC. NUM. COUNT: 1
PATENT INFORMATION:

PATENT NO.	KIND	DATE	APPLICATION NO.	DATE
EP 582503	A1	19940209	EP 1993-401902	19930722
EP 582503	B1	19961127		
R: AT, BE, CH, DE, DK, ES, FR, GB, GR, IE, IT, LI, NL, PT, SE				
FR 2694893	A1	19940225	FR 1992-9603	19920803
FR 2694884	A1	19940225	FR 1992-12343	19921015
FR 2694884	B1	19961018		
AT 145544	E	19961215	AT 1993-401902	19930722
ES 2095015	T3	19970201	ES 1993-401902	19930722
CA 2101760	AA	19940204	CA 1993-2101760	19930802
AU 9344341	A1	19940210	AU 1993-44341	19930802
AU 666743	B2	19960222		
ZA 9305568	A	19940301	ZA 1993-5568	19930802
JP 06184002	A2	19940705	JP 1993-210908	19930803
US 5741518	A	19980421	US 1996-698658	19960816
US 5866158	A	19990202	US 1996-736936	19961028
PRIORITY APPLN. INFO.:			FR 1992-9603	19920803
			FR 1992-12343	19921015
			US 1995-473360	19950607

OTHER SOURCE(S): MARPAT 120:226511

L23 ANSWER 16 OF 40 CAPLUS COPYRIGHT 2001 ACS
ACCESSION NUMBER: 1993:260711 CAPLUS
DOCUMENT NUMBER: 118:260711
TITLE: Cosmetics containing ginseng extract and cholesterol
derivatives
INVENTOR(S): Abe, Takashi; Kondo, Mitsuo
PATENT ASSIGNEE(S): Kanebo Ltd, Japan
SOURCE: Jpn. Kokai Tokkyo Koho, 6 pp.
CODEN: JKXXAF
DOCUMENT TYPE: Patent
LANGUAGE: Japanese
FAMILY ACC. NUM. COUNT: 1
PATENT INFORMATION:

PATENT NO.	KIND	DATE	APPLICATION NO.	DATE
JP 05051314	A2	19930302	JP 1991-233912	19910820

L23 ANSWER 23 OF 40 CAPLUS COPYRIGHT 2001 ACS
 ACCESSION NUMBER: 1990:411949 CAPLUS
 DOCUMENT NUMBER: 113:11949
 TITLE: Nail lacquers containing cholesteryl sulfates
 INVENTOR(S): Matsunodan, Sayuri; Toyoshima, Yasumitsu; Okaya, Yoshio; Hirose, Taku
 PATENT ASSIGNEE(S): Pola Chemical Industries, Ltd., Japan
 SOURCE: Jpn. Kokai Tokkyo Koho, 4 pp.
 CODEN: JKXXAF
 DOCUMENT TYPE: Patent
 LANGUAGE: Japanese
 FAMILY ACC. NUM. COUNT: 1
 PATENT INFORMATION:

PATENT NO.	KIND	DATE	APPLICATION NO.	DATE
JP 01305014	A2	19891208	JP 1988-135176	19880601

L23 ANSWER 24 OF 40 CAPLUS COPYRIGHT 2001 ACS
 ACCESSION NUMBER: 1990:411932 CAPLUS
 DOCUMENT NUMBER: 113:11932
 TITLE: Hair preparations containing cholesteryl sulfate
 INVENTOR(S): Matsunodan, Sayuri; Toyoshima, Yasumitsu; Okaya, Yoshio; Hirose, Taku
 PATENT ASSIGNEE(S): Pola Chemical Industries, Ltd., Japan
 SOURCE: Jpn. Kokai Tokkyo Koho, 4 pp.
 CODEN: JKXXAF
 DOCUMENT TYPE: Patent
 LANGUAGE: Japanese
 FAMILY ACC. NUM. COUNT: 1
 PATENT INFORMATION:

PATENT NO.	KIND	DATE	APPLICATION NO.	DATE
JP 01305018	A2	19891208	JP 1988-135177	19880601

L23 ANSWER 31 OF 40 CAPLUS COPYRIGHT 2001 ACS
 ACCESSION NUMBER: 1986:10400 CAPLUS
 DOCUMENT NUMBER: 104:10400
 TITLE: Cosmetics containing cholesteryl sulfates
 INVENTOR(S): Abe, Takashi; Miyamoto, Tatsu; Maeno, Kiyoshi
 PATENT ASSIGNEE(S): Kanebo, Ltd., Japan
 SOURCE: Jpn. Kokai Tokkyo Koho, 7 pp.
 CODEN: JKXXAF
 DOCUMENT TYPE: Patent
 LANGUAGE: Japanese
 FAMILY ACC. NUM. COUNT: 1
 PATENT INFORMATION:

PATENT NO.	KIND	DATE	APPLICATION NO.	DATE
JP 60161911	A2	19850823	JP 1984-16238	19840131
JP 62041684	B4	19870904		

=> d L23 13,16,23,24,31 abs

L23 ANSWER 13 OF 40 CAPLUS COPYRIGHT 2001 ACS

AB Cosmetic compns. contg. aq. dispersion of stabilized vesicles of amphiphilic non-ionic lipids, e.g. sorbitan palmitate (I), are disclosed. Vesicles prepd. from I 1.425, cholesterol 1.425, Na glutamate 0.15, preservatives 0.02, and water q.s. 100g. The above vesicles were intact and stable at temp of -20.degree. to +20.degree.. Formulations of different cosmetics contg. above vesicles are disclosed.

L23 ANSWER 16 OF 40 CAPLUS COPYRIGHT 2001 ACS

AB Cosmetics contg. cultured ginseng ext. and cholesterol (I) derivs. and optionally amino acids are claimed. The cosmetics activate skin cell, improve circulation, provide skin moisturizing effect, and show wrinkle-preventing and skin-lightening effects. A skin lotion contg.

EtOH

10.0, dipropylene glycol 2.0, polyoxyethylene nonylphenyl ether 0.5, methylparaben 0.01, cultured ginseng ext. 5.0, I sulfate sodium salt dihydrate 0.5, L-threonine 0.5, glycerin 5.0, perfume 0.1 wt.%, and H2O balance was prepd.

L23 ANSWER 23 OF 40 CAPLUS COPYRIGHT 2001 ACS

AB Nail lacquers contain 0.01-10 % cholesteryl sulfate or salts thereof. The

nail lacquers protect the nail and treat the damaged nail. A treatment soln. for nail comprised glycerin 9, EtOH 12, 1,3-butylene glycol 3, KOH 0.1, poly(oxyethylene) hydrogenated castor oil 1, methylparaben 0.2, fragrance 0.1, cholesteryl sulfate 0.5, and H2O 74.1 wt.%.

L23 ANSWER 24 OF 40 CAPLUS COPYRIGHT 2001 ACS

AB Hair preps., which have good moisturizing effect and prevent or recover damaged hair, contain 0.01-10 wt.% (based on total bases) cholesteryl sulfate (I) and/or its salts. A hair cream comprised poly(oxyethylene) behenyl ether 5, isostearyl alc. 5, liq. paraffin 35, dehydrated lanolin 2, beeswax 1, cetanol 1.5, butylparaben 0.1, I 4, glycerin 5, and H2O 41.3% by wt.

L23 ANSWER 31 OF 40 CAPLUS COPYRIGHT 2001 ACS

AB Cosmetics contain cholesteryl sulfate [1256-86-6] and(or) its salts (0.01-5.0% by wt.). Application of the cosmetics to the skin hold moisture for a long period. Thus, beeswax 2.0, stearic acid 5.0, stearyl alc. 3.0, reduced lanolin 2.0, squalane 15.0, polyoxyethylene sorbitan monostearate 3.0, sorbitan monostearate 3.0, and cholesteryl sulfate 0.5% by wt. were mixed at 80.degree. and then combined with a mixt. of propylene glycol 5.0, preservative 0.2 and H2O 61.25% by wt. After the mixt. was cooled to 50.degree., 0.05% by wt. perfume was added.

=> file biosys

'BIOSYS' IS NOT A VALID FILE NAME

SESSION CONTINUES IN FILE 'CAPLUS'

Enter "HELP FILE NAMES" at an arrow prompt (=>) for a list of files that are available. If you have requested multiple files, you can specify a corrected file name or you can enter "IGNORE" to continue accessing the remaining file names entered.

=> file stng

COST IN U.S. DOLLARS

SINCE FILE

TOTAL

ENTRY

SESSION

FULL ESTIMATED COST

18.67

104.09

DISCOUNT AMOUNTS (FOR QUALIFYING ACCOUNTS)	SINCE FILE	TOTAL
CA SUBSCRIBER PRICE	ENTRY	SESSION
	-2.94	-3.53

FILE 'STNGUIDE' ENTERED AT 17:49:06 ON 29 JUN 2001
 USE IS SUBJECT TO THE TERMS OF YOUR CUSTOMER AGREEMENT
 COPYRIGHT (C) 2001 AMERICAN CHEMICAL SOCIETY, JAPAN SCIENCE
 AND TECHNOLOGY CORPORATION, AND FACHINFORMATIONSZENTRUM KARLSRUHE

FILE CONTAINS CURRENT INFORMATION.
 LAST RELOADED: Jun 22, 2001 (20010622/UP).

=> file medline

COST IN U.S. DOLLARS	SINCE FILE	TOTAL
FULL ESTIMATED COST	ENTRY	SESSION
	0.00	104.09

DISCOUNT AMOUNTS (FOR QUALIFYING ACCOUNTS)	SINCE FILE	TOTAL
CA SUBSCRIBER PRICE	ENTRY	SESSION
	0.00	-3.53

FILE 'MEDLINE' ENTERED AT 17:50:10 ON 29 JUN 2001

FILE LAST UPDATED: 25 JUN 2001 (20010625/UP). FILE COVERS 1958 TO DATE.

On April 22, 2001, MEDLINE was reloaded. See HELP RLOAD for details.

MEDLINE now contains new records from the former NLM HEALTH STAR database. These records have an Entry Date and Update Date of 20010223.

MEDLINE thesauri in the /CN, /CT, and /MN fields incorporate the MeSH 2001 vocabulary. Enter HELP THESAURUS for details.

The OLDMEDLINE file segment now contains data from 1958 through 1965. Enter HELP CONTENT for details.

Left, right, and simultaneous left and right truncation are available in the Basic Index. See HELP SFIELDS for details.

THIS FILE CONTAINS CAS REGISTRY NUMBERS FOR EASY AND ACCURATE SUBSTANCE IDENTIFICATION.

=> d his

(FILE 'HOME' ENTERED AT 17:03:12 ON 29 JUN 2001)

FILE 'REGISTRY' ENTERED AT 17:03:24 ON 29 JUN 2001

```

E 2864-50-8/RN
L1      1 S E3
        E CHOLESTEROL, HYDROGEN SULFATE
        E CHOLESTEROL SULFATE
        E CHOLESTERYL SULFATE
L2      23 S CHOLESTEROL AND SULFATE
L3      1 S CHOLESTEROL AND SULFATE AND POTASSIUM

```

FILE 'KOSMET' ENTERED AT 17:10:38 ON 29 JUN 2001

```

L4      53 S CHOLESTEROL AND SULFATE
L5      14 S EXFOLIANT
L6      0 S L4 AND L5

```

L7 443 S RETINOIC OR RETINOID
L8 6 S L4 AND L7
L9 21 S GLUCOSAMINE
L10 3 S ACETYL AND L9
L11 2 S ACETYLGALACTOSAMINE
L12 203 S CHOLESTERYL OR CHOLESTEROL
L13 751 S SULFATE OR SULPHATE
L14 61 S L12(P)L13
L15 61 S L12 AND L13
L16 61 S L12 (P) L13

FILE 'STNGUIDE' ENTERED AT 17:16:51 ON 29 JUN 2001

FILE 'KOSMET' ENTERED AT 17:16:59 ON 29 JUN 2001
L17 6 S GALACTOSAMINE OR ACETYLGALACTOSAMINE
L18 25 S L9 OR L17
L19 0 S L15 AND L18
L20 0 S L15 AND EXFOLIANT
L21 6 S L15 AND L7

FILE 'CAPLUS' ENTERED AT 17:20:49 ON 29 JUN 2001
L22 5 S L1 AND L3
L23 40 S L1 OR L3

FILE 'REGISTRY' ENTERED AT 17:25:20 ON 29 JUN 2001
E ACETYLGALACTOSAMINE
E N-ACETYL-D-GLUCOSAMINE
E N-ACETYLGALACTOSAMINE
E GLUCOSAMINE, N-ACETYL
L24 1061 S E2 AND ACETYL
L25 898 S L24 AND ACETYLGALACTOSAMINE
E ACETYLGALACTOSAMINE
E ACETYLGALACTOSAMINE
E N-ACETYLGALACTOSAMINE
E ACETYLGALACTOSAMINE, N
L26 256 S E2
L27 3 S L26(W)"N"

FILE 'STNGUIDE' ENTERED AT 17:33:01 ON 29 JUN 2001

FILE 'REGISTRY' ENTERED AT 17:39:07 ON 29 JUN 2001
L28 1 S 7512-17-6/RN
L29 1 S 1811-31-0/RN

FILE 'CAPLUS' ENTERED AT 17:40:25 ON 29 JUN 2001
L30 40 S L1 OR L3
L31 5506 S L28 OR L29
L32 0 S L30 AND L31
L33 0 S L30 AND EXFOLIANT

FILE 'STNGUIDE' ENTERED AT 17:49:06 ON 29 JUN 2001

FILE 'MEDLINE' ENTERED AT 17:50:10 ON 29 JUN 2001

=> s L1 and L3
0 L1
0 L3
L34 0 L1 AND L3

=> s L28 or L29

2351 L28
0 L29
L35 2351 L28 OR L29

=> s L1 or L3
0 L1
0 L3
L36 0 L1 OR L3

=> file stng
COST IN U.S. DOLLARS SINCE FILE TOTAL
 ENTRY SESSION
FULL ESTIMATED COST 0.72 104.81

DISCOUNT AMOUNTS (FOR QUALIFYING ACCOUNTS) SINCE FILE TOTAL
 ENTRY SESSION
CA SUBSCRIBER PRICE 0.00 -3.53

FILE 'STNGUIDE' ENTERED AT 17:51:24 ON 29 JUN 2001
USE IS SUBJECT TO THE TERMS OF YOUR CUSTOMER AGREEMENT
COPYRIGHT (C) 2001 AMERICAN CHEMICAL SOCIETY, JAPAN SCIENCE
AND TECHNOLOGY CORPORATION, AND FACHINFORMATIONSZENTRUM KARLSRUHE

FILE CONTAINS CURRENT INFORMATION.
LAST RELOADED: Jun 22, 2001 (20010622/UP).

=> file ipa
COST IN U.S. DOLLARS SINCE FILE TOTAL
 ENTRY SESSION
FULL ESTIMATED COST 0.00 104.81

DISCOUNT AMOUNTS (FOR QUALIFYING ACCOUNTS) SINCE FILE TOTAL
 ENTRY SESSION
CA SUBSCRIBER PRICE 0.00 -3.53

FILE 'IPA' ENTERED AT 17:52:19 ON 29 JUN 2001
COPYRIGHT (C) 2001 American Society of Hospital Pharmacists (ASHP)

FILE COVERS 1970 TO 1 JUN 2001 (20010601/ED)

This file contains CAS Registry Numbers for easy and accurate
substance identification.

=> s L1 or L3
1 L1
0 L3
L37 1 L1 OR L3

=> s L28 or L29
1 L28
1 L29
L38 2 L28 OR L29

=> s L37 and L38
L39 0 L37 AND L38

=> d L37 ti

L37 ANSWER 1 OF 1 IPA COPYRIGHT 2001 ASHP

TI Novel antifungal drug delivery: stable amphotericin B-cholesteryl sulfate discs

=> file stng

COST IN U.S. DOLLARS	SINCE FILE ENTRY	TOTAL SESSION
FULL ESTIMATED COST	0.60	105.41
DISCOUNT AMOUNTS (FOR QUALIFYING ACCOUNTS)	SINCE FILE ENTRY	TOTAL SESSION
CA SUBSCRIBER PRICE	0.00	-3.53

FILE 'STNGUIDE' ENTERED AT 17:53:11 ON 29 JUN 2001
USE IS SUBJECT TO THE TERMS OF YOUR CUSTOMER AGREEMENT
COPYRIGHT (C) 2001 AMERICAN CHEMICAL SOCIETY, JAPAN SCIENCE
AND TECHNOLOGY CORPORATION, AND FACHINFORMATIONSZENTRUM KARLSRUHE

FILE CONTAINS CURRENT INFORMATION.
LAST RELOADED: Jun 22, 2001 (20010622/UP).

=> file jicst-eplus

COST IN U.S. DOLLARS	SINCE FILE ENTRY	TOTAL SESSION
FULL ESTIMATED COST	0.00	105.41
DISCOUNT AMOUNTS (FOR QUALIFYING ACCOUNTS)	SINCE FILE ENTRY	TOTAL SESSION
CA SUBSCRIBER PRICE	0.00	-3.53

FILE 'JICST-EPLUS' ENTERED AT 17:55:11 ON 29 JUN 2001
COPYRIGHT (C) 2001 Japan Science and Technology Corporation (JST)

FILE COVERS 1985 TO 25 JUN 2001 (20010625/ED)

THE JICST-EPLUS FILE HAS BEEN RELOADED TO REFLECT THE 1999 CONTROLLED TERM (/CT) THESAURUS RELOAD.

=> s L1 or L3

0 L1
0 L3
L40 0 L1 OR L3

=> s cholesterol or cholesteryl

9533 CHOLESTEROL
78 CHOLESTEROLS
9566 CHOLESTEROL
(CHOLESTEROL OR CHOLESTEROLS)
436 CHOLESTERYL
L41 9718 CHOLESTEROL OR CHOLESTERYL

=> s sulfate or sulphate

25867 SULFATE
420 SULFATES
26003 SULFATE
(SULFATE OR SULFATES)
620 SULPHATE
33 SULPHATES
640 SULPHATE
(SULPHATE OR SULPHATES)

L42 26391 SULFATE OR SULPHATE

=> s L41 L42

MISSING OPERATOR L41 L42

The search profile that was entered contains terms or nested terms that are not separated by a logical operator.

=> s L41(w)L42

L43 23 L41(W)L42

=> s glucosamine or galactosamine

665 GLUCOSAMINE

3 GLUCOSAMINES

667 GLUCOSAMINE

(GLUCOSAMINE OR GLUCOSAMINES)

479 GALACTOSAMINE

3 GALACTOSAMINES

481 GALACTOSAMINE

(GALACTOSAMINE OR GALACTOSAMINES)

L44 1061 GLUCOSAMINE OR GALACTOSAMINE

=> s L43 and L44

L45 0 L43 AND L44

=> s L43 and exfoliant

0 EXFOLIANT

L46 0 L43 AND EXFOLIANT

=> d L43 1-23 ti

L43 ANSWER 1 OF 23 JICST-EPlus COPYRIGHT 2001 JST

TI Science of ceramide-the functions and applications. A skin-identical lipid

concentrate for an improved skin-barrier function.

L43 ANSWER 2 OF 23 JICST-EPlus COPYRIGHT 2001 JST

TI Regulation of the Activities of Thrombin and Plasmin by **Cholesterol Sulfate** as a Physiological Inhibitor in Human Plasma.

L43 ANSWER 3 OF 23 JICST-EPlus COPYRIGHT 2001 JST

TI Expression of Steroid Sulfatase in Human Breast Cancer.

L43 ANSWER 4 OF 23 JICST-EPlus COPYRIGHT 2001 JST

TI Inhibition of Pancreatic Elastase by Sulfated Lipids in the Intestinal Mucosa.

L43 ANSWER 5 OF 23 JICST-EPlus COPYRIGHT 2001 JST

TI Roles of **cholesterol sulfate** and sulfatide in the digestive tract. Mucosal protective effect as a protease inhibitor.

L43 ANSWER 6 OF 23 JICST-EPlus COPYRIGHT 2001 JST

TI A Case of Recessive X-Linked Ichthyosis: Scale-Specific Abnormalities of Lipid Composition May Explain the Pathogenesis of the Skin Manifestation.

L43 ANSWER 7 OF 23 JICST-EPlus COPYRIGHT 2001 JST

TI Biosynthesis of acidic glycolipid in alimentary canal mucosa cells and regulation. (Sponsor : Ministry of Education).

L43 ANSWER 8 OF 23 JICST-EPlus COPYRIGHT 2001 JST

- TI Hormone dependence expressions of sulfate group transferase in endometrium and its significances.(Sponsor : Ministry of Education).
- L43 ANSWER 9 OF 23 JICST-EPlus COPYRIGHT 2001 JST
TI Pseudopregnancy-Dependent Accumulation of **Cholesterol Sulfate** Due to Up-Regulation of Cholesterol Sulfotransferase and Concurrent Down-Regulation of **Cholesterol Sulfate** Sulfatase in the Uterine Endometria of Rabbits.
- L43 ANSWER 10 OF 23 JICST-EPlus COPYRIGHT 2001 JST
TI **Cholesterol sulfate** content and synthetic and degrading enzyme activities in each organization of a rabbit.
- L43 ANSWER 11 OF 23 JICST-EPlus COPYRIGHT 2001 JST
TI Lipid change recognized in hypertrophic cicatrical epidermidis.
- L43 ANSWER 12 OF 23 JICST-EPlus COPYRIGHT 2001 JST
TI Keratinocyte differentiation in mouse prenatal epidermis and specific expression of **cholesterol sulfate** unit transferase.
- L43 ANSWER 13 OF 23 JICST-EPlus COPYRIGHT 2001 JST
TI Synthesis of **cholesterol sulfate** and hormone dependent concurrency control of degrading enzymes in rabbit endometrium.
- L43 ANSWER 14 OF 23 JICST-EPlus COPYRIGHT 2001 JST
TI Evaluation of plasma **cholesterol sulfate** concentration in patients with liver cirrhosis.
- L43 ANSWER 15 OF 23 JICST-EPlus COPYRIGHT 2001 JST
TI Changes in epidermal **cholesterol sulfate** cycle observed in hyperplastic scars and epidermal skin of a foetus.
- L43 ANSWER 16 OF 23 JICST-EPlus COPYRIGHT 2001 JST
TI Relationship among Natures of Scalp Skin, Hair Follicle and Hair Shaft in Young Females.
- L43 ANSWER 17 OF 23 JICST-EPlus COPYRIGHT 2001 JST
TI **Cholesterol Sulfate**-Containing Liposomes Entrapping Adriamycin. Pharmacokinetics and Antineoplastic Effect.
- L43 ANSWER 18 OF 23 JICST-EPlus COPYRIGHT 2001 JST
TI Preparation and Some Properties of **Cholesterol Sulfate** -Containing Liposomes Entrapping Adriamycin.
- L43 ANSWER 19 OF 23 JICST-EPlus COPYRIGHT 2001 JST
TI Peculiar manifestation of **cholesterol sulfate** in implantation phase of the rabbit endometria.
- L43 ANSWER 20 OF 23 JICST-EPlus COPYRIGHT 2001 JST
TI Age difference of human nail components and morphology.
- L43 ANSWER 21 OF 23 JICST-EPlus COPYRIGHT 2001 JST
TI Inhibitory effect of liposomes containing sulfatide or **cholesterol sulfate** on syncytium formation induced by bovine immunodeficiency virus-infected cells.
- L43 ANSWER 22 OF 23 JICST-EPlus COPYRIGHT 2001 JST
TI Two cases of X-linked ichthyosis associated with myopathies.

L43 ANSWER 23 OF 23 JICST-EPlus COPYRIGHT 2001 JST
TI Distinct differences in lipid composition between epidermis and dermis
from footpad and dorsal skin of guinea pigs.

=> file stng

COST IN U.S. DOLLARS	SINCE FILE ENTRY	TOTAL SESSION
FULL ESTIMATED COST	1.84	107.25
DISCOUNT AMOUNTS (FOR QUALIFYING ACCOUNTS)	SINCE FILE ENTRY	TOTAL SESSION
CA SUBSCRIBER PRICE	0.00	-3.53

FILE 'STNGUIDE' ENTERED AT 17:57:32 ON 29 JUN 2001
USE IS SUBJECT TO THE TERMS OF YOUR CUSTOMER AGREEMENT
COPYRIGHT (C) 2001 AMERICAN CHEMICAL SOCIETY, JAPAN SCIENCE
AND TECHNOLOGY CORPORATION, AND FACHINFORMATIONSZENTRUM KARLSRUHE

FILE CONTAINS CURRENT INFORMATION.
LAST RELOADED: Jun 22, 2001 (20010622/UP).

=> file caplus

COST IN U.S. DOLLARS	SINCE FILE ENTRY	TOTAL SESSION
FULL ESTIMATED COST	0.00	107.25
DISCOUNT AMOUNTS (FOR QUALIFYING ACCOUNTS)	SINCE FILE ENTRY	TOTAL SESSION
CA SUBSCRIBER PRICE	0.00	-3.53

FILE 'CAPLUS' ENTERED AT 18:10:48 ON 29 JUN 2001
USE IS SUBJECT TO THE TERMS OF YOUR STN CUSTOMER AGREEMENT.
PLEASE SEE "HELP USAGETERMS" FOR DETAILS.
COPYRIGHT (C) 2001 AMERICAN CHEMICAL SOCIETY (ACS)

Copyright of the articles to which records in this database refer is held by the publishers listed in the PUBLISHER (PB) field (available for records published or updated in Chemical Abstracts after December 26, 1996), unless otherwise indicated in the original publications.

FILE COVERS 1947 - 29 Jun 2001 VOL 135 ISS 2
FILE LAST UPDATED: 28 Jun 2001 (20010628/ED)

This file contains CAS Registry Numbers for easy and accurate substance identification.

This file supports REGISTRY for direct browsing and searching of all substance data from the REGISTRY file. Enter HELP FIRST for more information.

Caplus now provides online access to patents and literature covered in CA from 1947 to the present. On April 22, 2001, bibliographic information and abstracts were added for over 2.2 million references published in CA from 1947 to 1966.

The CA Lexicon is now available in the Controlled Term (/CT) field. Enter HELP LEXICON for full details.

Attention, the CA Lexicon is the copyrighted intellectual property of the American Chemical Society and is provided to assist you in searching databases on STN. Any dissemination, distribution, copying, or storing of this information, without the prior written consent of CAS, is strictly prohibited.

=> d L23 5,7 ti

L23 ANSWER 5 OF 40 CAPLUS COPYRIGHT 2001 ACS
TI Cholesterol sulfate compositions for enhancement of stratum corneum function

L23 ANSWER 7 OF 40 CAPLUS COPYRIGHT 2001 ACS
TI Use of sterol sulfates in cosmetic and/or pharmaceutical compositions for inhibiting serine proteases

=> d L23 5,7 ibib,abs

L23 ANSWER 5 OF 40 CAPLUS COPYRIGHT 2001 ACS
ACCESSION NUMBER: 2000:553386 CAPLUS
DOCUMENT NUMBER: 133:155171
TITLE: Cholesterol sulfate compositions for enhancement of stratum corneum function
INVENTOR(S): Maes, Daniel H.; Marenus, Kenneth D.; Fthenakis, Christina G.
PATENT ASSIGNEE(S): Color Access, Inc., USA
SOURCE: PCT Int. Appl., 23 pp.
CODEN: PIXXD2
DOCUMENT TYPE: Patent
LANGUAGE: English
FAMILY ACC. NUM. COUNT: 1
PATENT INFORMATION:

PATENT NO.	KIND	DATE	APPLICATION NO.	DATE
WO 2000045786	A1	20000810	WO 2000-US2750	20000202
W:	AE, AL, AM, AT, AU, AZ, BA, BB, BG, BR, BY, CA, CH, CN, CR, CU, CZ, DE, DK, DM, EE, ES, FI, GB, GD, GE, GH, GM, HR, HU, ID, IL, IN, IS, JP, KE, KG, KP, KR, KZ, LC, LK, LR, LS, LT, LU, LV, MA, MD, MG, MK, MN, MW, MX, NO, NZ, PL, PT, RO, RU, SD, SE, SG, SI, SK, SL, TJ, TM, TR, TT, TZ, UA, UG, UZ, VN, YU, ZA, ZW, AM, AZ, BY, KG, KZ, MD, RU, TJ, TM			
RW:	GH, GM, KE, LS, MW, SD, SL, SZ, TZ, UG, ZW, AT, BE, CH, CY, DE, DK, ES, FI, FR, GB, GR, IE, IT, LU, MC, NL, PT, SE, BF, BJ, CF, CG, CI, CM, GA, GN, GW, ML, MR, NE, SN, TD, TG			
EP 1069883	A1	20010124	EP 2000-905946	20000202
R:	AT, BE, CH, DE, DK, ES, FR, GB, GR, IT, LI, LU, NL, SE, MC, PT, IE, SI, LT, LV, FI, RO			
PRIORITY APPLN. INFO.:			US 1999-246607	A 19990208
			WO 2000-US2750	W 20000202

AB The present invention provides a method of retarding desquamation of the stratum corneum, and maintaining stratum corneum thickness, by applying to the skin an effective amt. of cholesterol sulfate. The retardation of desquamation can be useful in enhancing the skin's own UV protection, in prolonging the retention time of a sunless tan, and generally reducing the appearance of lines and wrinkles assocd. with both photo- and chronoaging.

Effects of 0.5 cholesterol sulfate twice daily on skin flakiness, as an indicator of its effect in reducing desquamation, was studied in 21-65 yr old subjects. The treated skin showed a 22.5% decrease in flakiness relative to baseline after 2 wk, and a 24.1% decrease after 4 wk. Formulation of a prepn. contg. 0.2% sodium cholesterol sulfate is disclosed.

REFERENCE COUNT: 7
 REFERENCE(S): (1) Abe; CAPLUS
 (2) Beiersdorf Ag; DE 19834812 A 2000 CAPLUS
 (3) Bernstein, J; WO 9001323 A 1990 CAPLUS
 (4) Henkel Kga; DE 19642872 C 1998 CAPLUS
 (5) Kanebo Ltd Japan; JP 60161911 A 1985 CAPLUS
 ALL CITATIONS AVAILABLE IN THE RE FORMAT

L23 ANSWER 7 OF 40 CAPLUS COPYRIGHT 2001 ACS
 ACCESSION NUMBER: 1998:112640 CAPLUS
 DOCUMENT NUMBER: 128:171970
 TITLE: Use of sterol sulfates in cosmetic and/or pharmaceutical compositions for inhibiting serine proteases
 INVENTOR(S): Wachter, Rolf; Tesmann, Holger; Behler, Ansgar; Maurer, Karl-Heinz
 PATENT ASSIGNEE(S): Henkel K.-G.a.A., Germany
 SOURCE: Ger., 6 pp.
 CODEN: GWXXAW
 DOCUMENT TYPE: Patent
 LANGUAGE: German
 FAMILY ACC. NUM. COUNT: 1
 PATENT INFORMATION:

PATENT NO.	KIND	DATE	APPLICATION NO.	DATE
DE 19642872	C1	19980212	DE 1996-19642872	19961017
WO 9817244	A1	19980430	WO 1997-EP5524	19971008
W: AU, BR, CA, CN, CZ, HU, JP, KR, MX, NO, NZ, PL, SI, SK, TR, US, VN				
RW: AT, BE, CH, DE, DK, ES, FI, FR, GB, GR, IE, IT, LU, MC, NL, PT, SE				
AU 9747808	A1	19980515	AU 1997-47808	19971008
EP 941054	A1	19990915	EP 1997-910423	19971008
R: DE, ES, FR, IT				
JP 2001502341	T2	20010220	JP 1998-518891	19971008
PRIORITY APPLN. INFO.:				
			DE 1996-19642872 A	19961017
			WO 1997-EP5524 W	19971008

AB Sterol sulfates are incorporated into cosmetic and/or pharmaceutical compns. as inhibitors of serine proteases, esp. elastase, to prevent formation of folds and wrinkles in the skin. The compns. are also useful for treatment of dandruff, psoriasis, and UV erythema. Thus, cholesterol Na sulfate inhibited elastase completely at 12.5 ppm.

=> file stng		
COST IN U.S. DOLLARS	SINCE FILE	TOTAL
	ENTRY	SESSION
FULL ESTIMATED COST	5.87	113.12
DISCOUNT AMOUNTS (FOR QUALIFYING ACCOUNTS)	SINCE FILE	TOTAL
	ENTRY	SESSION
CA SUBSCRIBER PRICE	-1.18	-4.71

FILE 'STNGUIDE' ENTERED AT 18:12:46 ON 29 JUN 2001
USE IS SUBJECT TO THE TERMS OF YOUR CUSTOMER AGREEMENT
COPYRIGHT (C) 2001 AMERICAN CHEMICAL SOCIETY, JAPAN SCIENCE
AND TECHNOLOGY CORPORATION, AND FACHINFORMATIONSZENTRUM KARLSRUHE

FILE CONTAINS CURRENT INFORMATION.
LAST RELOADED: Jun 22, 2001 (20010622/UP).